



QUICK START GUIDE

Congratulations!

You are now a proud owner of the
Skiware 2 3D Printer

Turn the page over and embark on the
journey to the world of 3D printing!



Setting up the Skriware 2 3D Printer

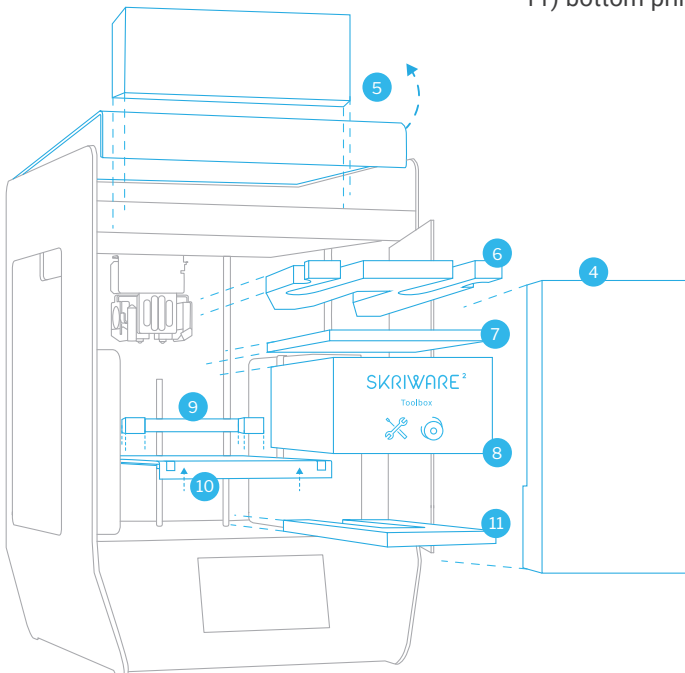
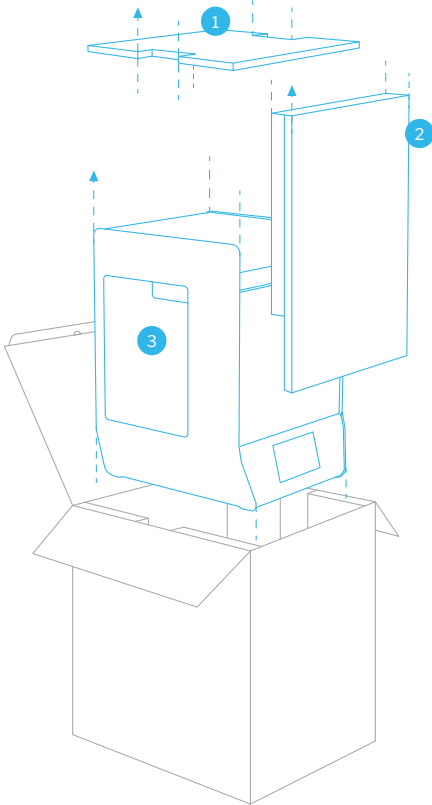
To securely take your new Skriware 2 3D printer out of the box, remove the top panel first (1) and then both front panels (2). Your 3D printer comes in a foil bag. Open it by removing the sticker on the top. You will find handles on both sides (3) by which you can lift Skriware 2. Place it on the designated working surface. Make sure it is stable and level. Use the adjustable feet on the bottom of the printer to adjust its level. Remove the tape securing the moving parts.

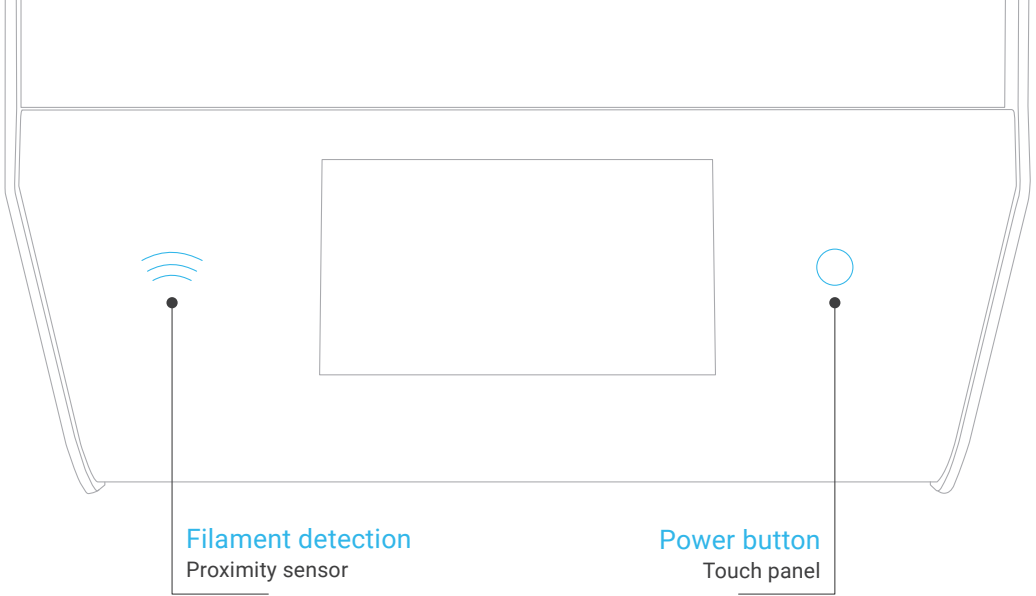
Gently push the front see-through panel of your Skriware 2 3D printer to open it, and start removing securing elements:

- 4) front door foam
- 5) cover foam (open the printer's top lid)
- 6) gantry system's foam
- 7) extruders' foam
- 8) toolbox
- 9) printing platform's foam
- 10) raise the printing platform gently by pulling up by the platform's back edge (**not the front!**).
- 11) bottom printing platform's foam

Inside the toolbox you will find: power cable, 2 filaments, 2 zipper bags to keep filaments dry, 2 spare nozzles, tweezers, spatula, 7mm spanner & hex keys (2mm, 2,5mm, 3mm & 4mm), nozzle cleaning needle.

Plug the power cable into the 3D printer's power socket on its back and into a grounded power socket, and then set the power switch on the back to 1 (ON) position. Optionally plug ethernet cable in the ethernet port.





First set up

Touch the **Power button** on the front of your Skriware 2 3D printer to turn it on. If this is your first time, you will be guided through the set up wizard to:

- connect to a network,
- pair your 3D printer with your existing or new **Skrimarket account** (www.skrimarket.com),
- learn about the functionalities of the **dashboard**.

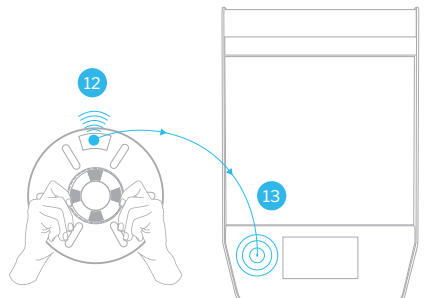
Levelling the printing platform

The **printing platform** comes pre-levelled. However, it is possible that it has moved during the delivery and needs alignment. Go to **SETTINGS** → **Maintenance**, press **CALIBRATE**, and follow the on-screen instructions.

Filament change

Skriware 2 3D printer is equipped with **automatic filament recognition**. During a filament change process (press **CHANGE** on the **dashboard** and select which filament you will be changing) you will be asked to scan the new filament by bringing the spool's **ID sticker (12)** close to the **proximity sensor (13)**.

Type and colour of filament will be used to adjust printing properties when printing from Skriware 3D Library or when cloud slicing, but will not override a .gcode prepared via the 3rd party software.



Safety & compliance



Risk of burns

Skriware 2 3D printer itself operates in a safe temperature spectrum but some of its parts can get extremely hot (up to 275°C/530°F). Never touch the hotend, extruder, or printing platform and their vicinities while you can see the red ! symbol on the display. These parts can stay hot up to 30 minutes after the 3D printer finishes operating.



Moving mechanical elements

Never reach into the Skriware 2 3D Printer's work area, and be careful around it, while it operates. Extruders' gantry system uses mighty engines that may pull in a piece of clothing or clip a body part.



Risk of electrocution

Skriware 2 3D Printer requires electric power to operate. Always connect the power cable to a grounded power socket. Never perform any maintenance while it is connected to a power socket, unless it is explicitly stated otherwise.



Dangerous vapours

Skriware 2 3D Printer has been designed to print with Skriware filaments. It is advised to use your Skriware 2 3D Printer in a well ventilated area. Depending on a type of filament, some dangerous vapours can be released during a print process. Use other than officially supported Skriware filaments at own risk as such use will void your warranty.



Electromagnetic and radio interference

Skriware 2 3D Printer is an electronic device and may cause radio and television interference. It also utilizes Wi-Fi radio which may cause disruptions in certain environments.



For more information on how to take the full advantage of your new, awesome machine go to www.skriware.com/support. You can always contact us at support@skriware.com.