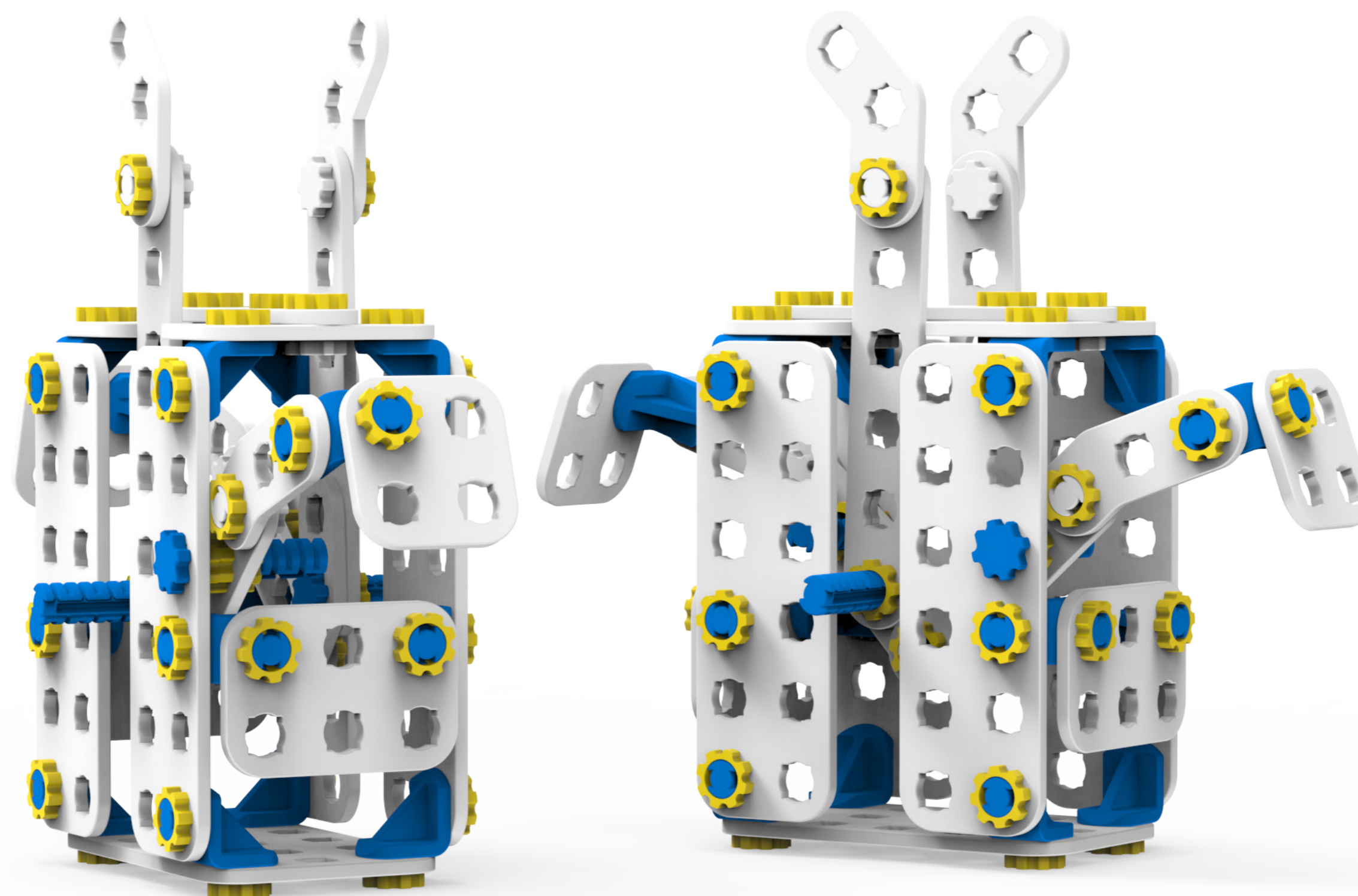
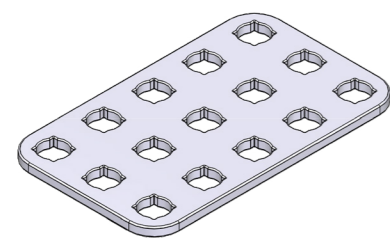


INSTRUKCJA SKŁADANIA

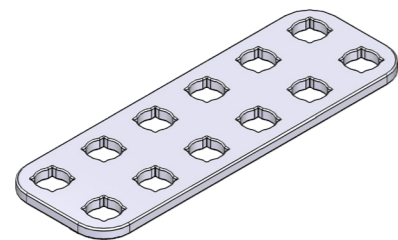
Stacja: Maszt zwycięstwa



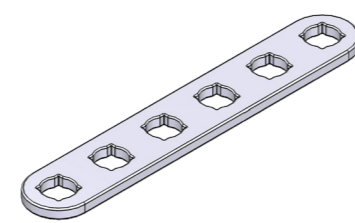
Lista elementów



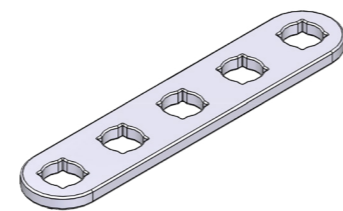
2x Płytki 3x5



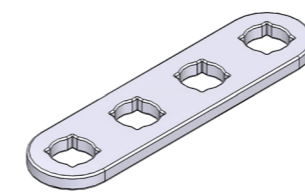
8x Płytki 2x6



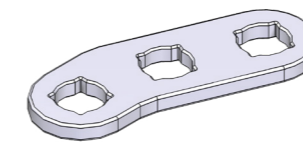
4x Płytki 1x6



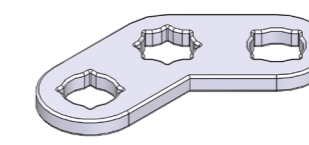
2x Płytki 1x5



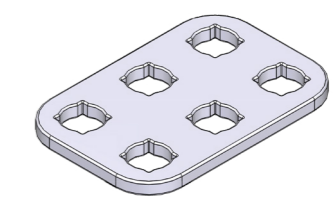
4x Płytki 1x4



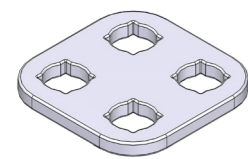
4x Płytki 1x3 22,5°



8x Płytki 1x3 45°



8x Płytki 2x3



4x Płytki 2x2



28x Kątownik



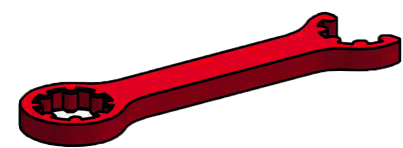
8x Śrubki wielopozycyjna



20x Śrubki sztywne



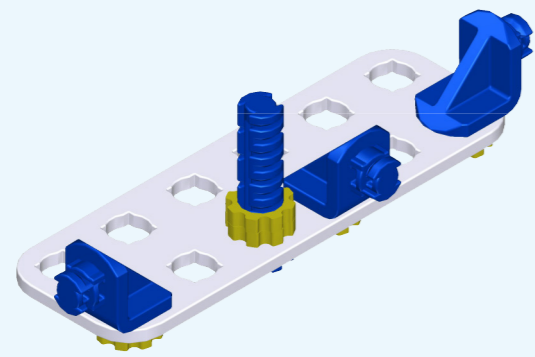
92x Nakrętka



1x Klucz zwykły



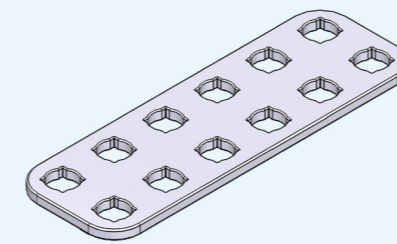
1x Klucz nasadowy



Krok 1

x4

4x



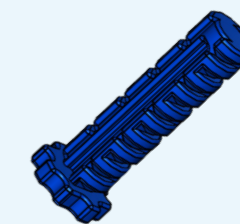
1x

+



3x

+

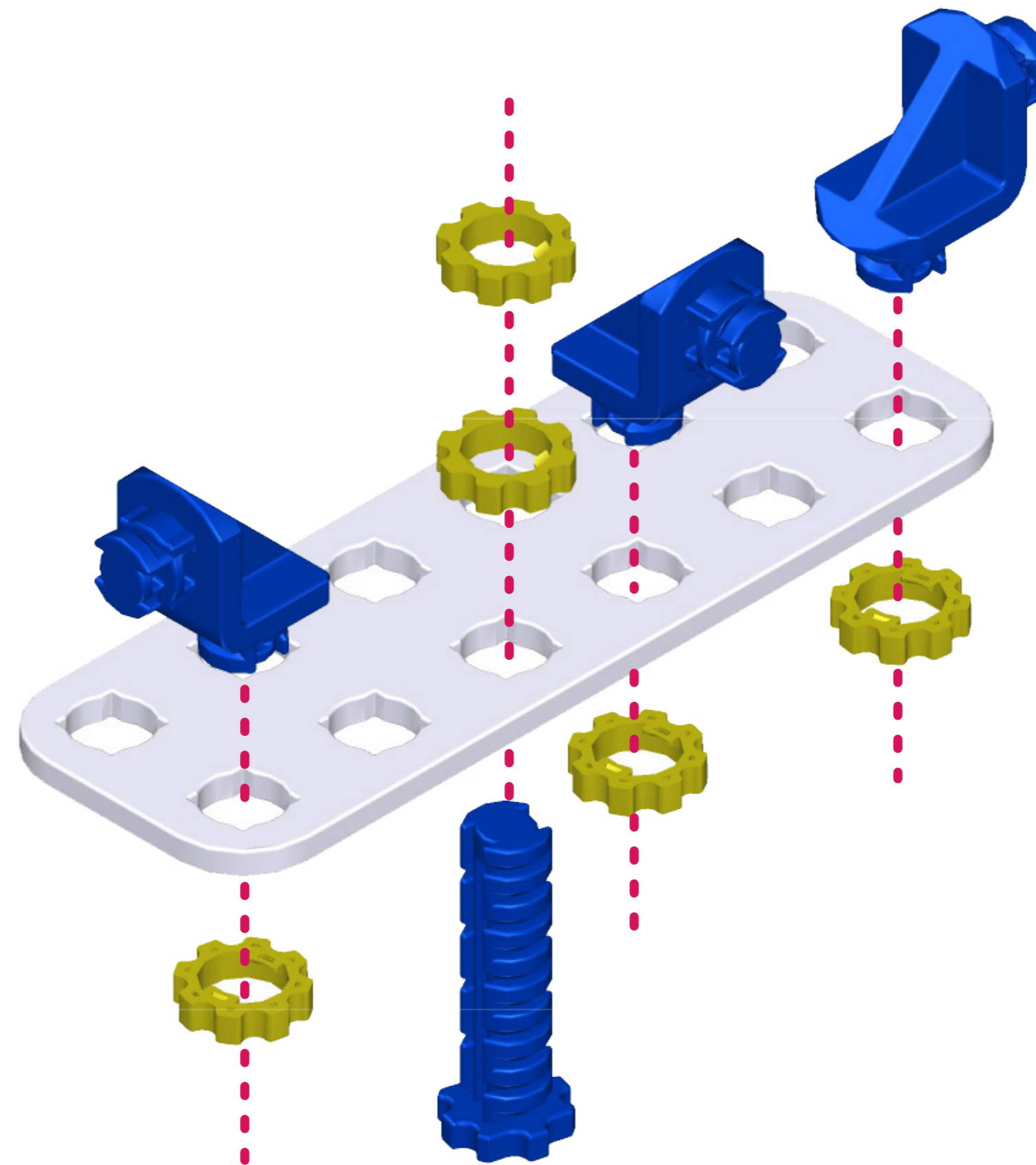


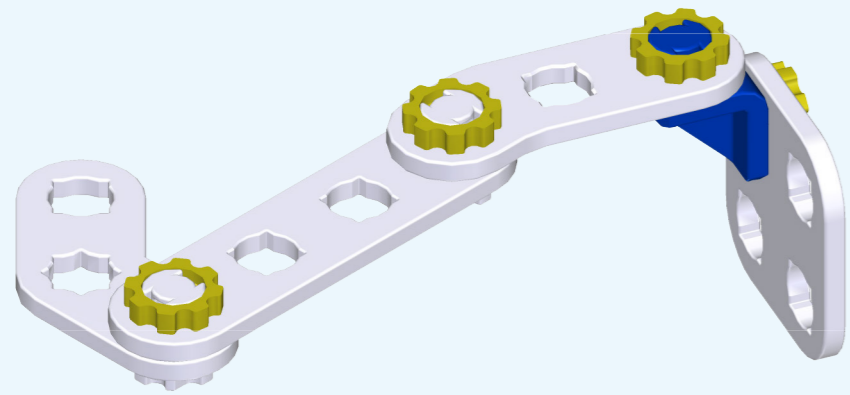
1x

+



5x

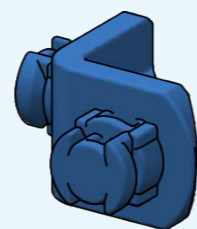




Krok 2

x4

4x



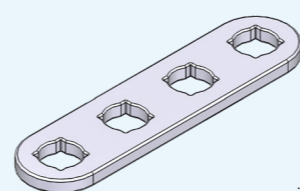
1x

+



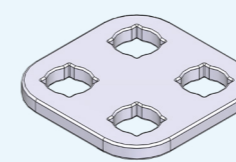
2x

+



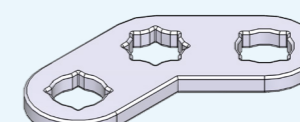
1x

+



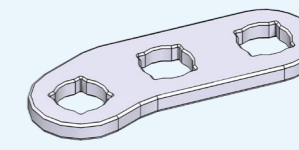
1x

+



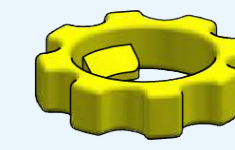
1x

+

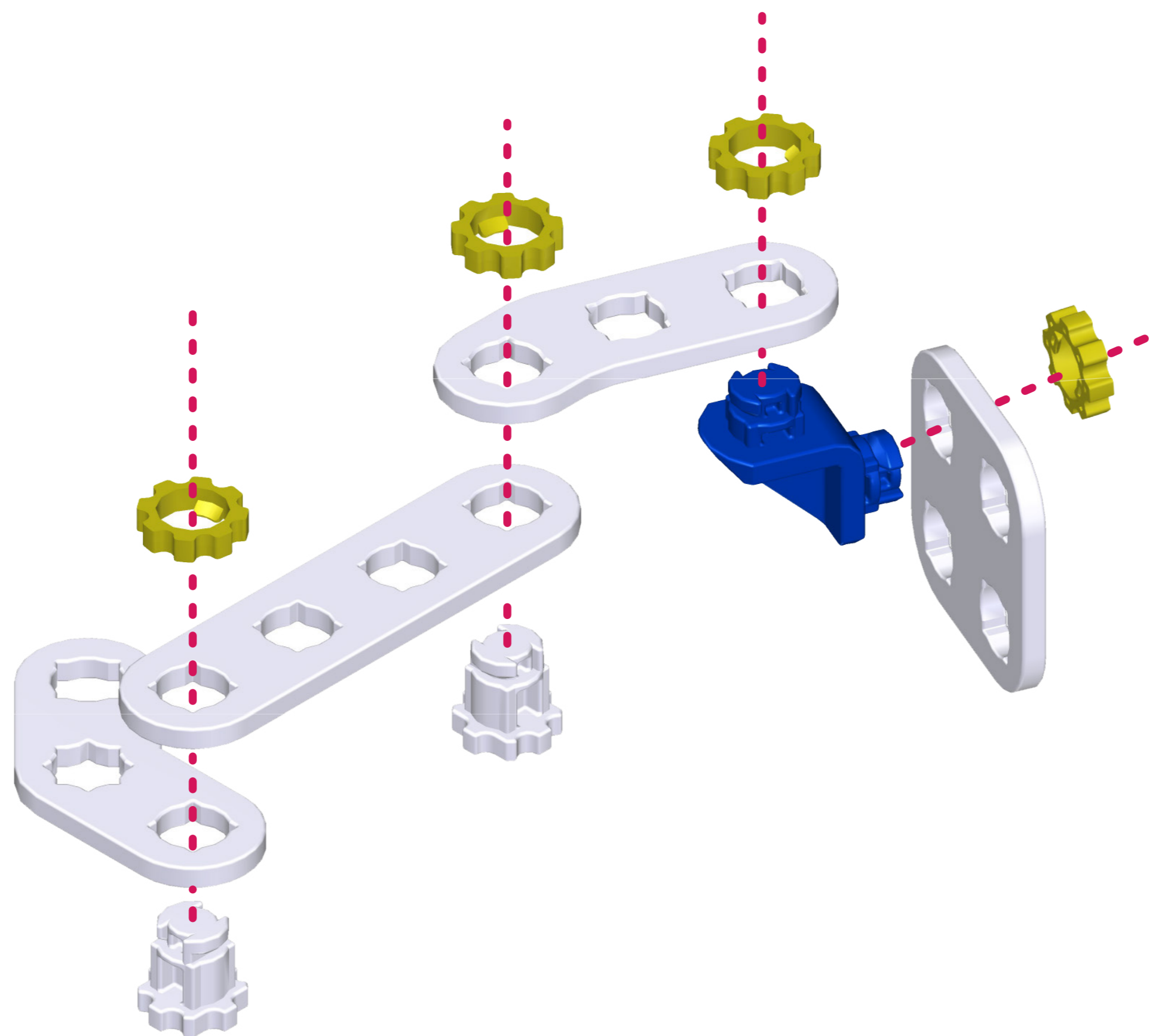


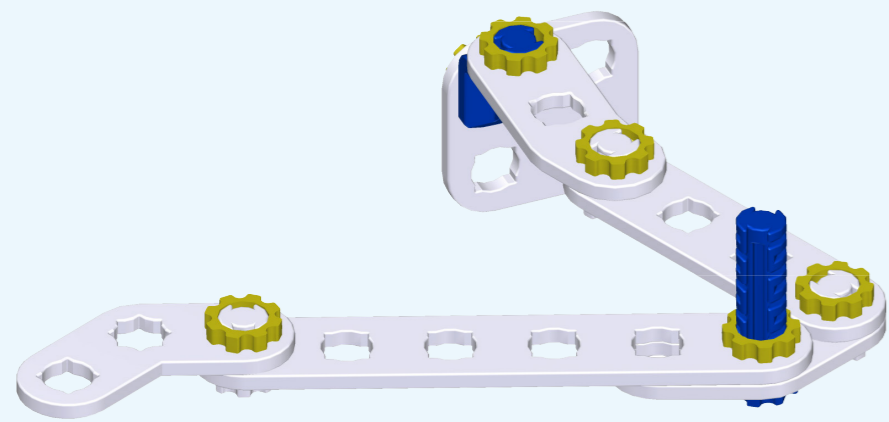
1x

+



4x

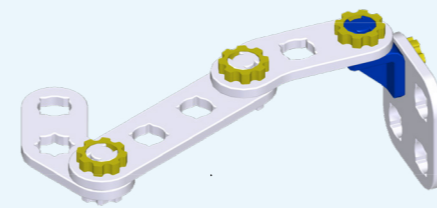




Krok 3

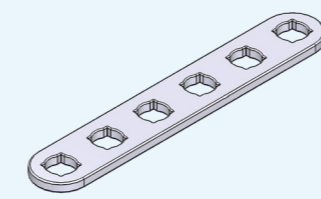
x4

4x



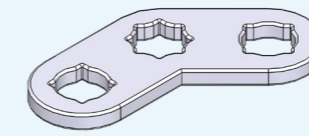
Krok 2

+



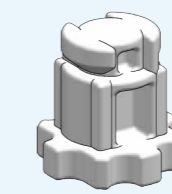
1x

+



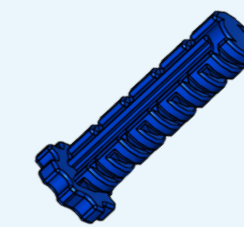
1x

+



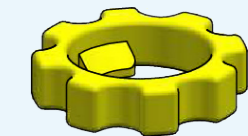
1x

+

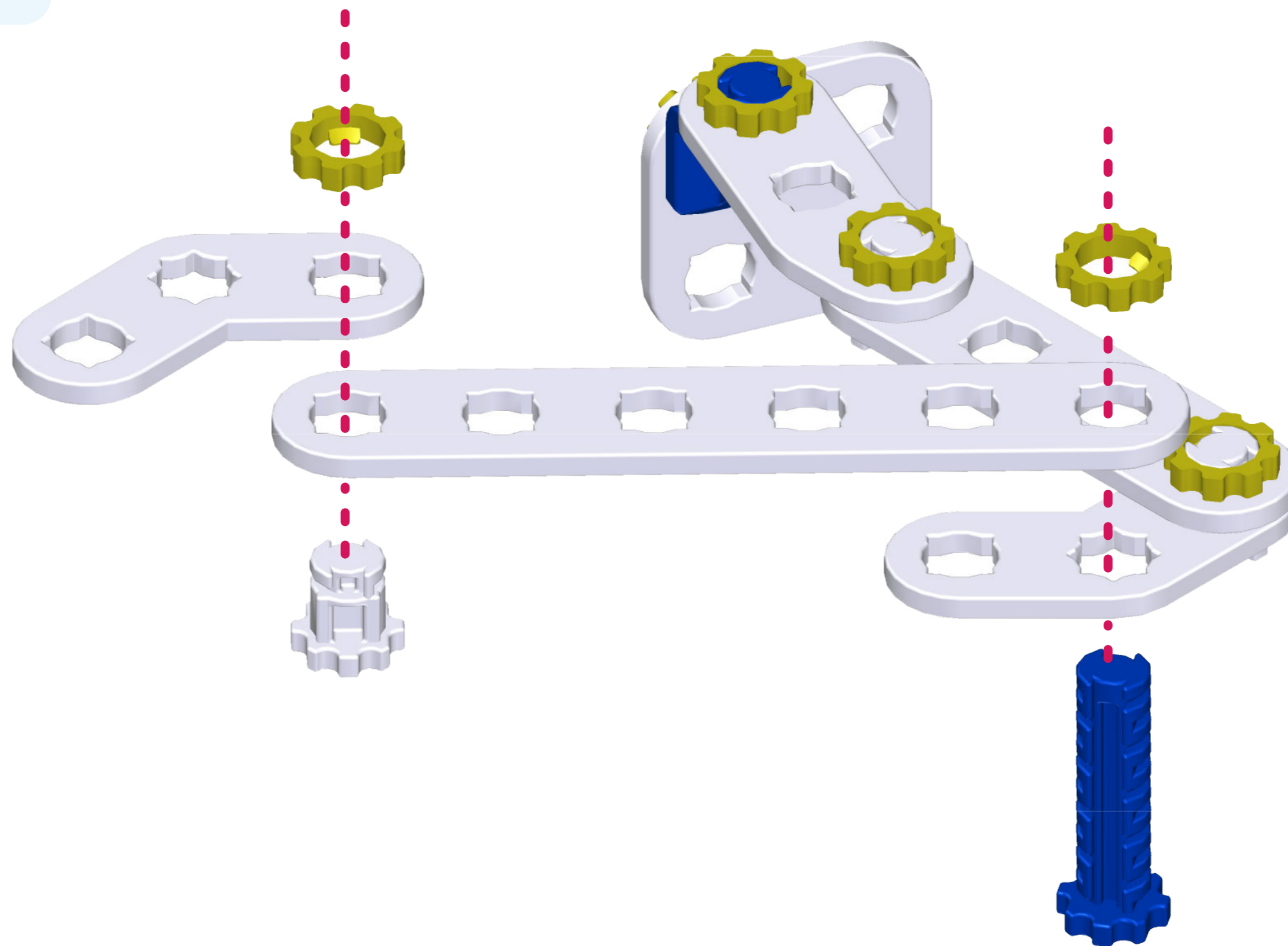


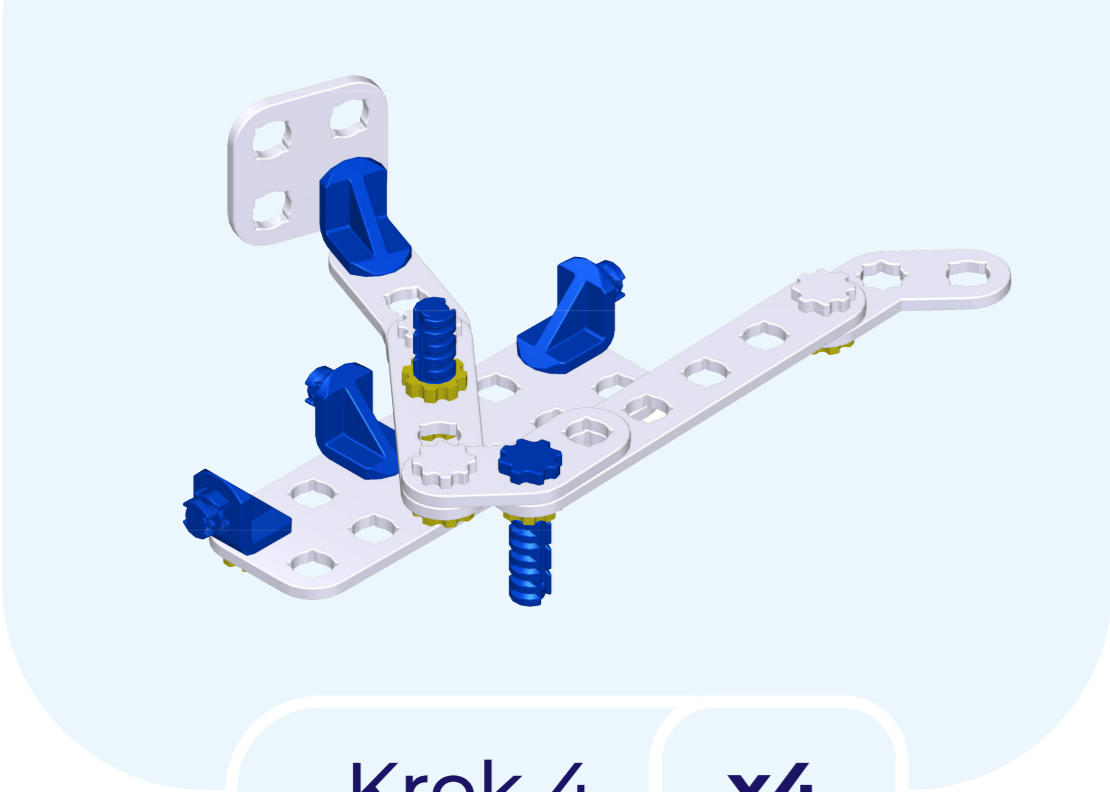
1x

+



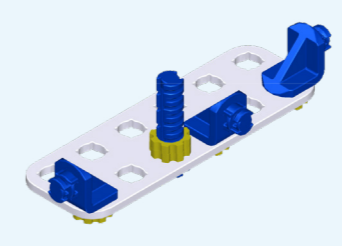
2x



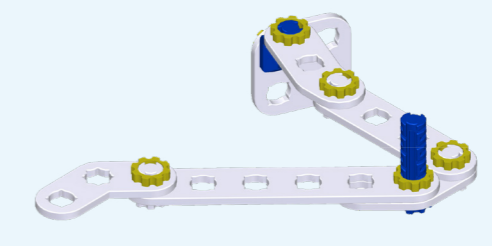


Krok 4 x4

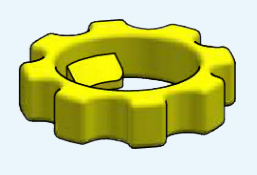
4x



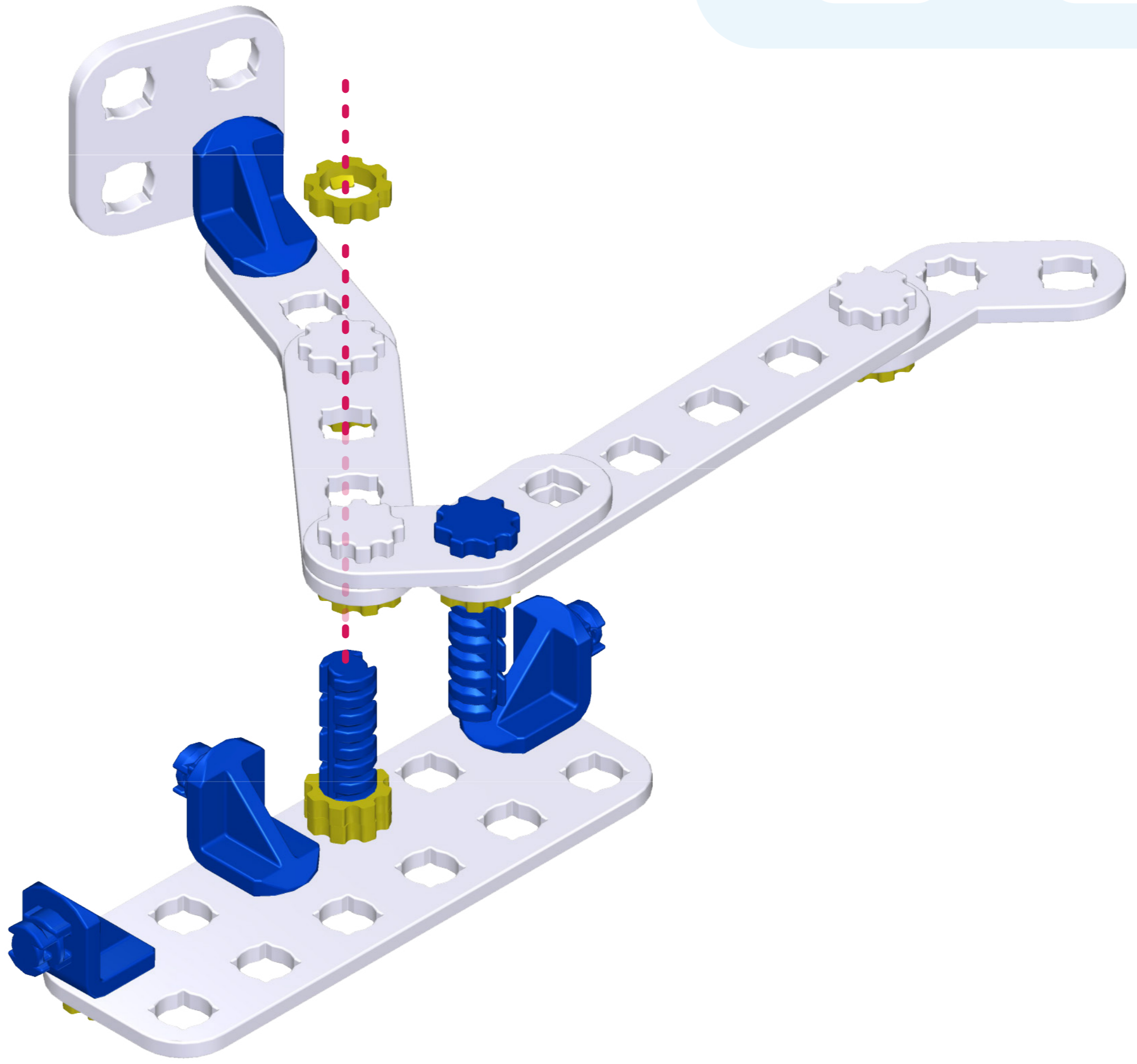
Krok 1

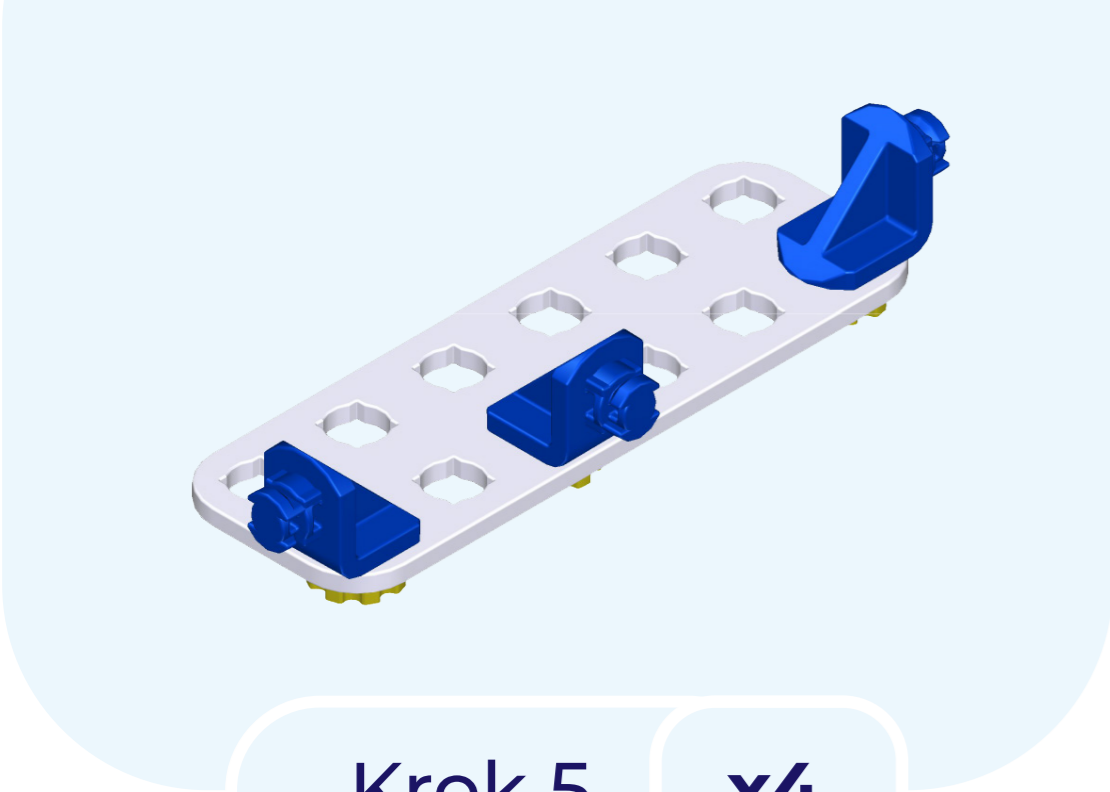


Krok 3



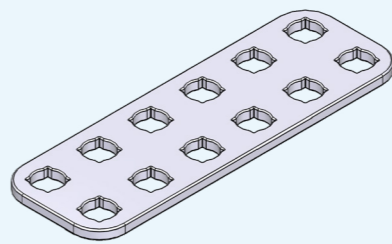
1x





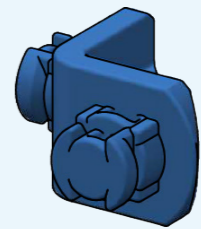
Krok 5 **x4**

4x



1x

+

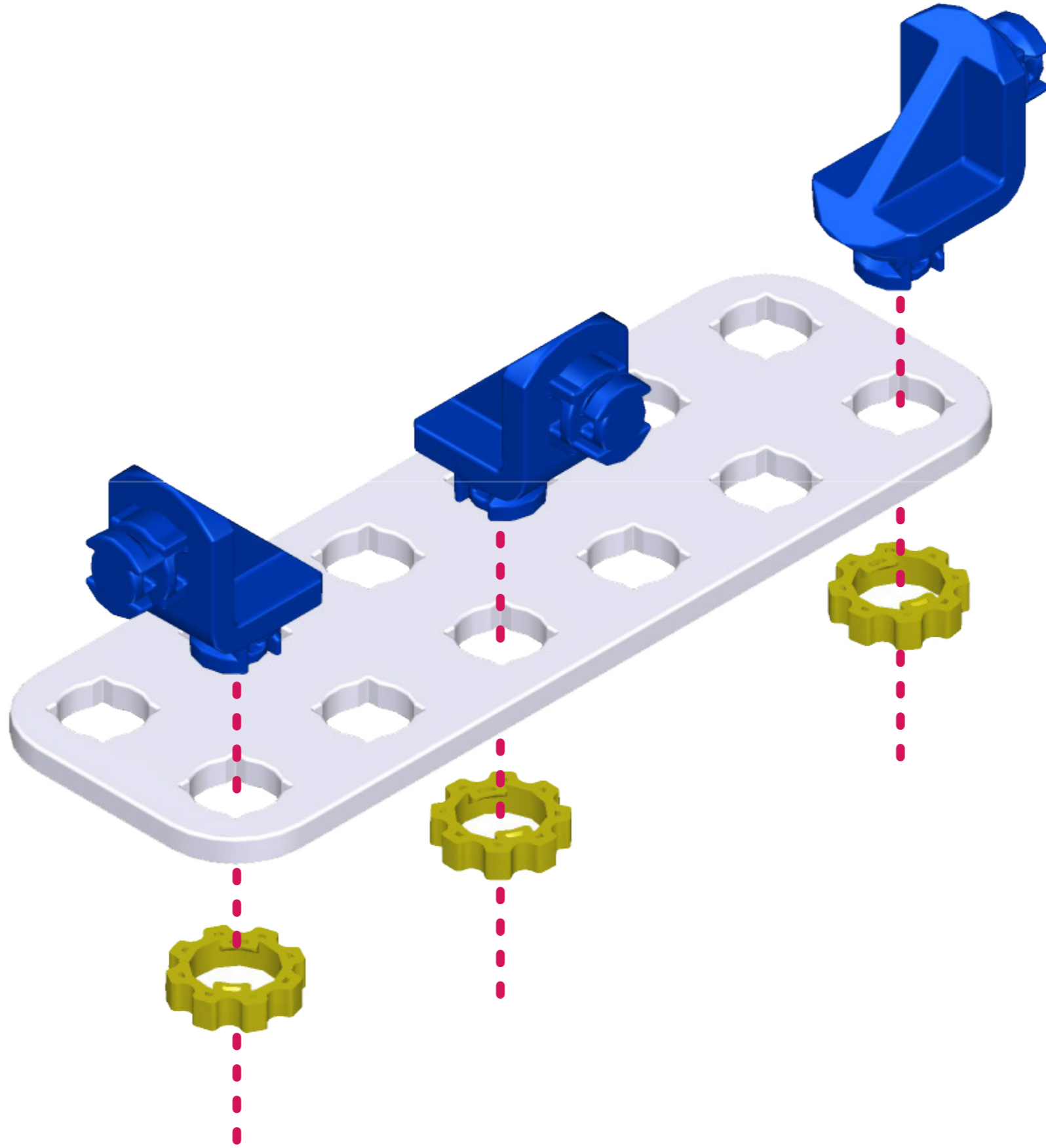


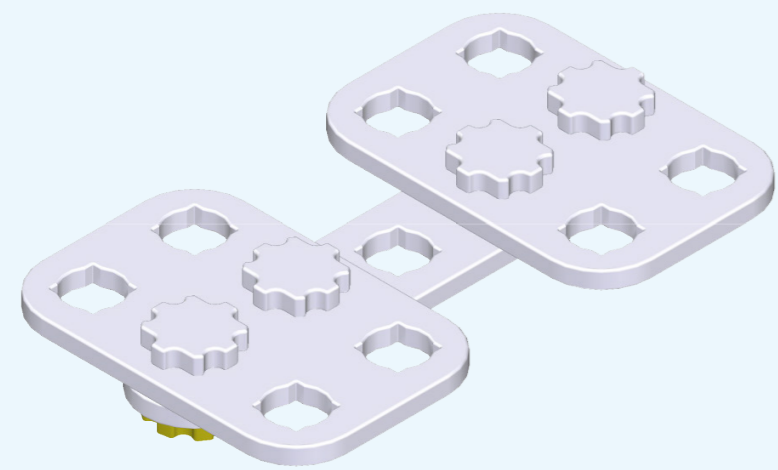
3x

+



3x

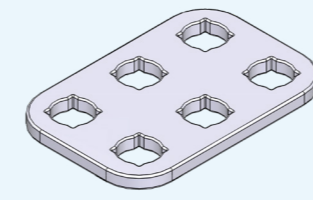




Krok 6

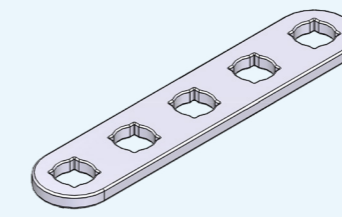
x2

2x



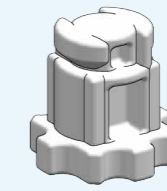
2x

+



1x

+

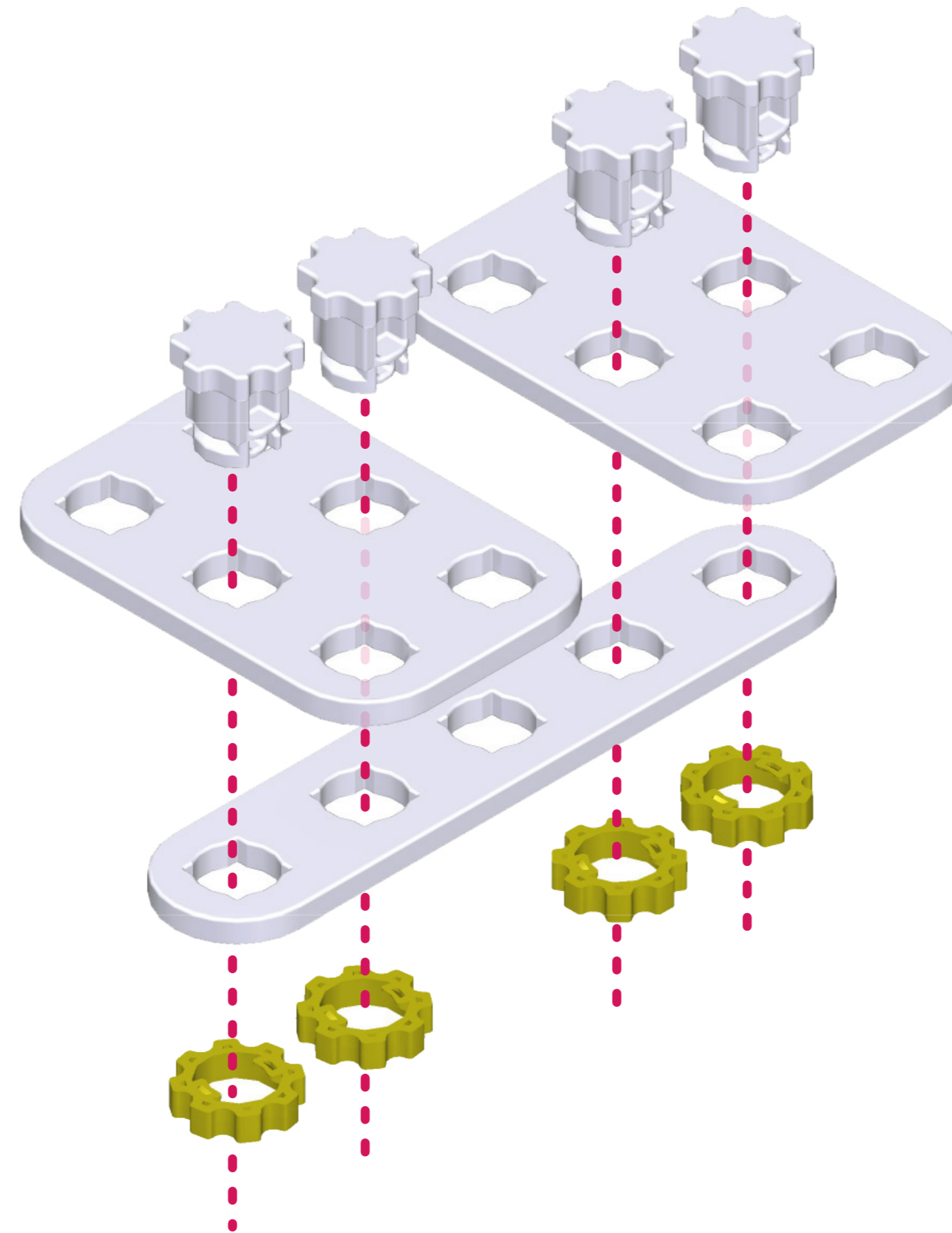


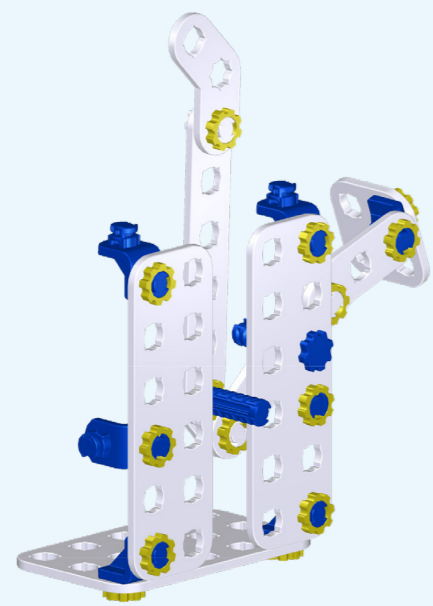
4x

+



4x

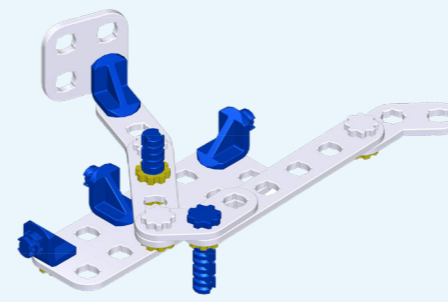




Krok 7

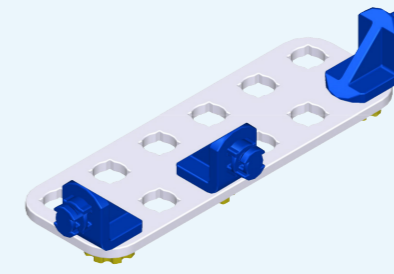
x2

2x



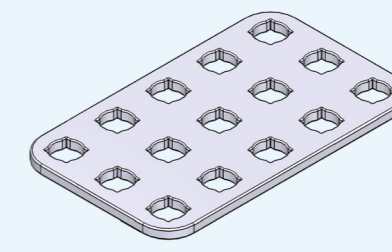
Krok 4

+



Krok 5

+

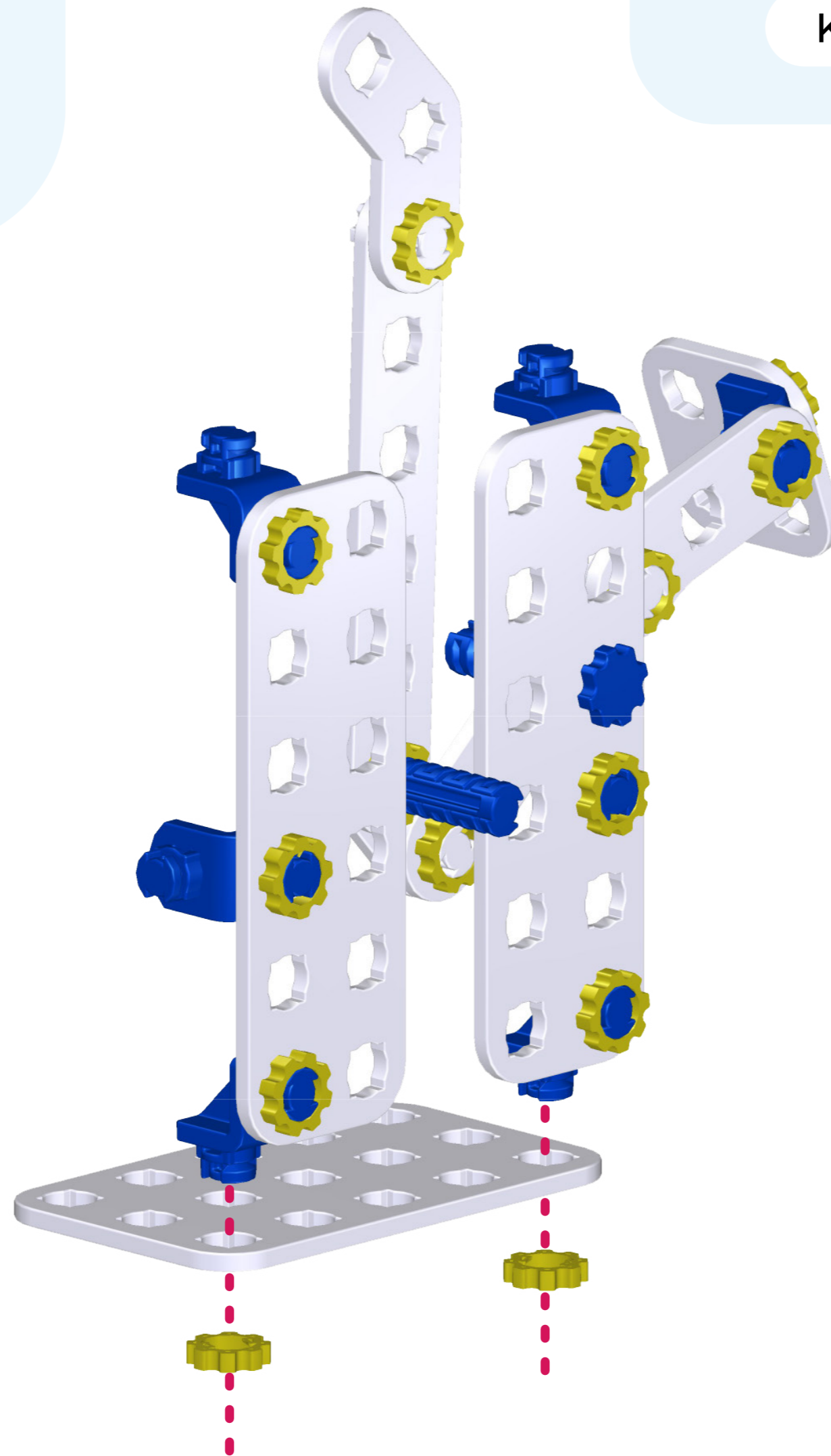


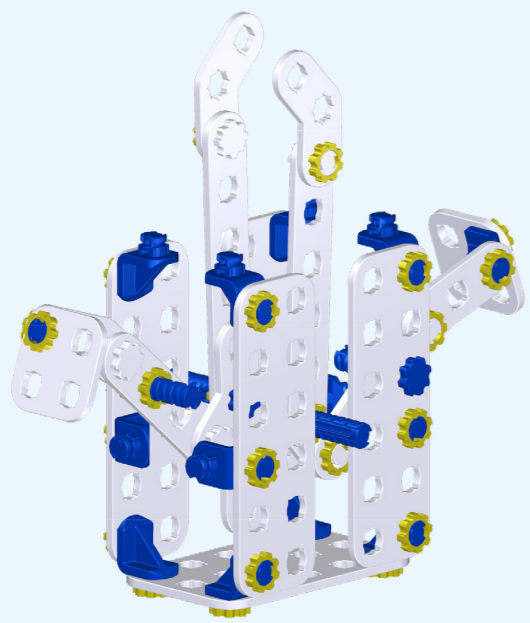
1x

+



2x





Krok 8

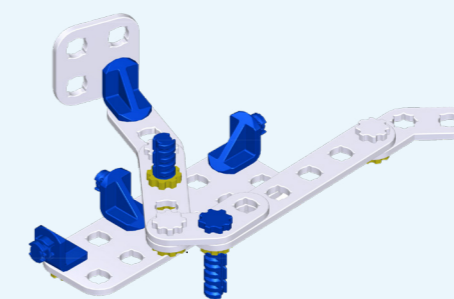
x2

2x



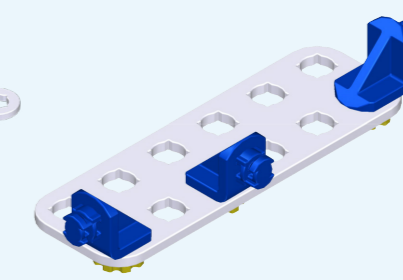
Krok 7

+



Krok 4

+

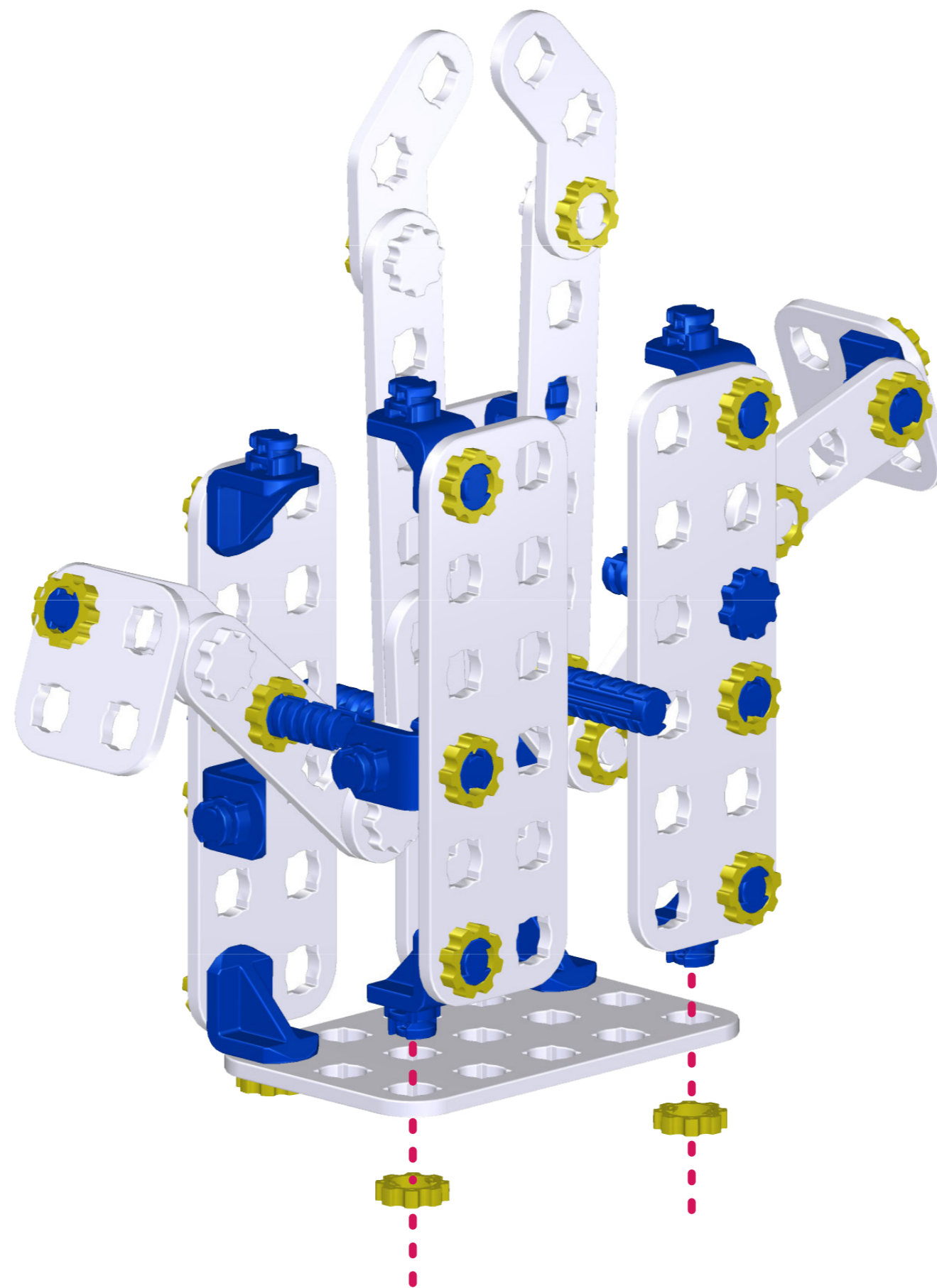


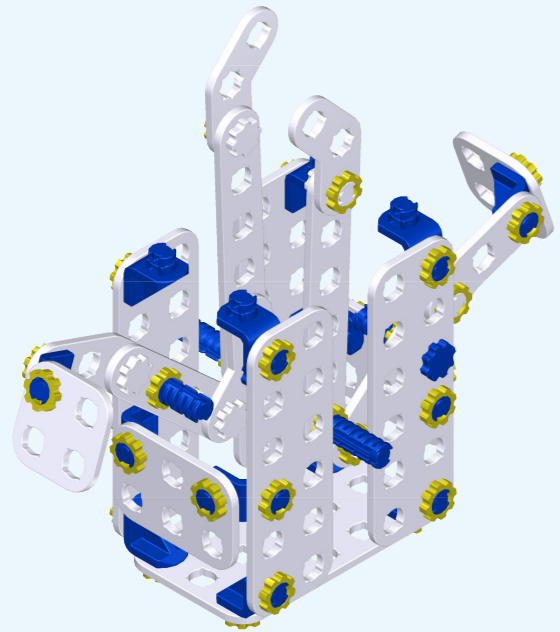
Krok 5

+



2x

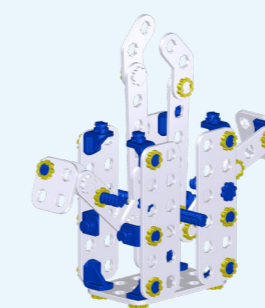




Krok 9

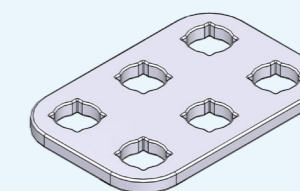
x2

2x



Krok 8

+



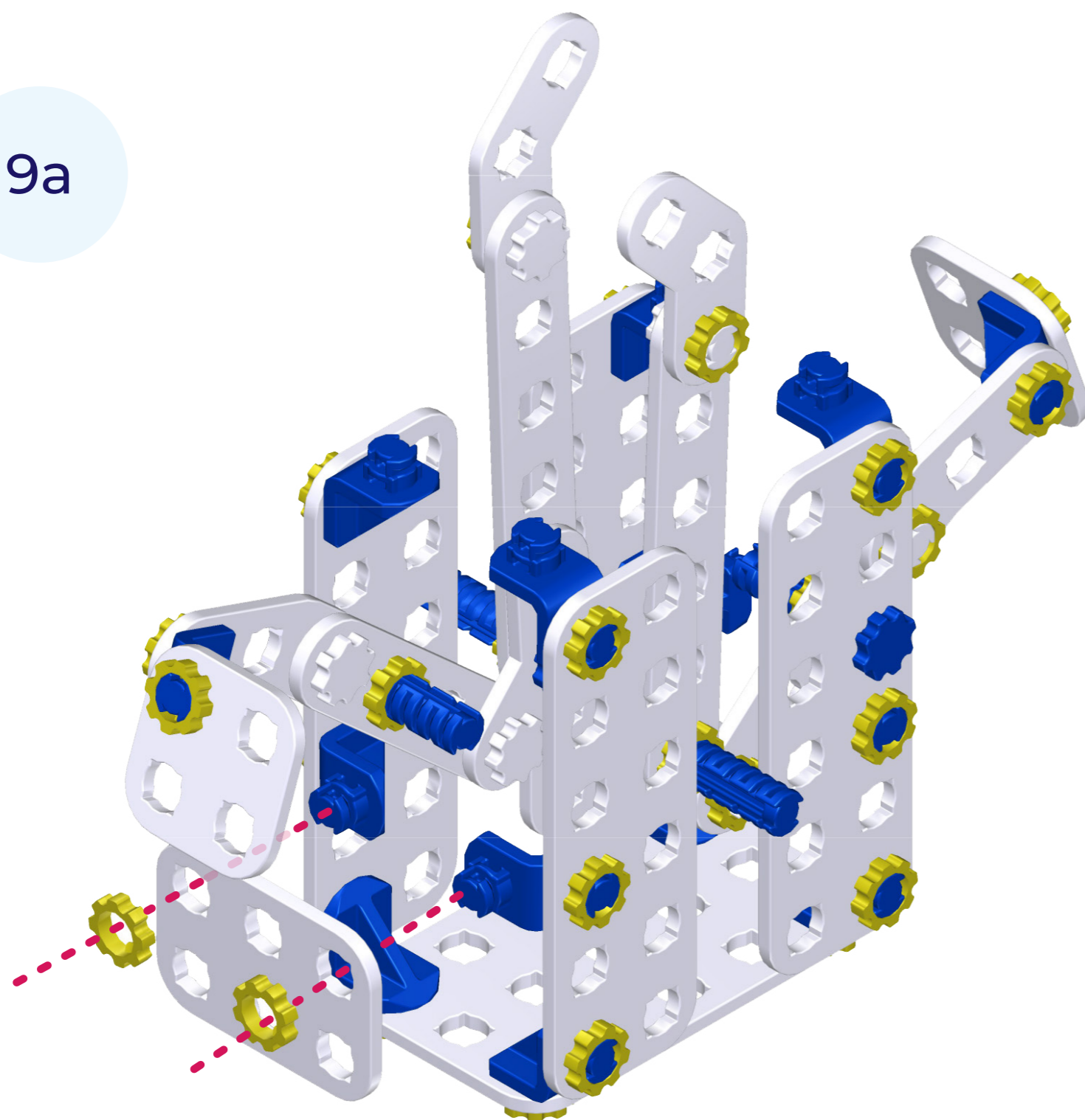
2x

+

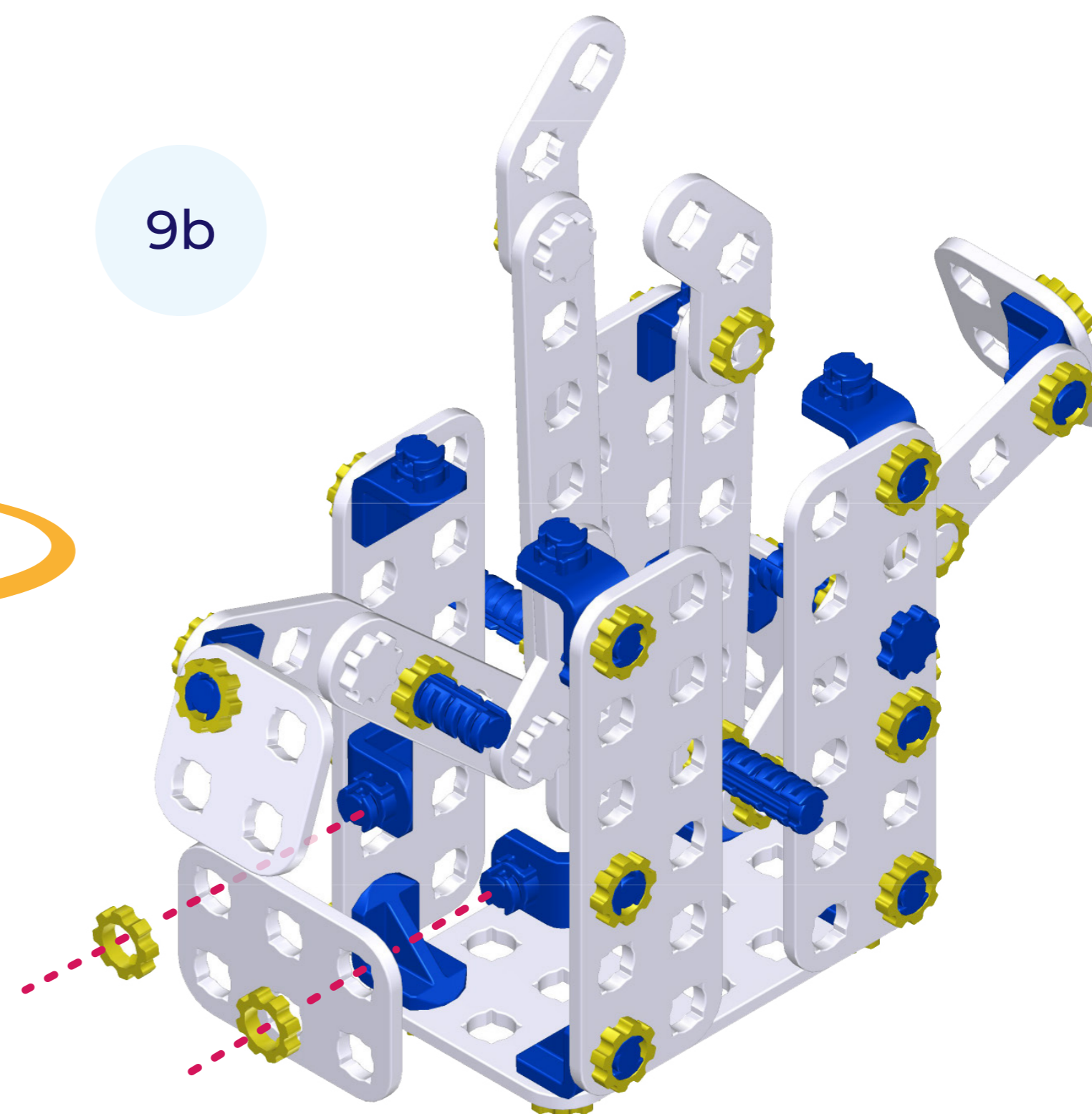
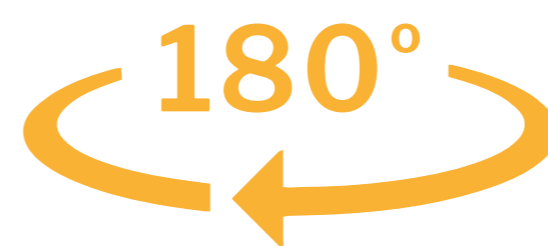


4x

9a



9b

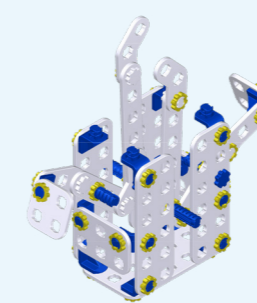




Krok 10

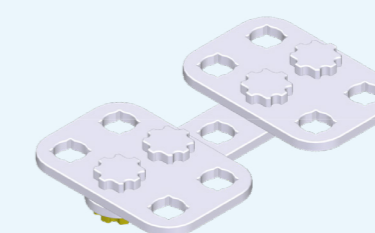
x2

2x



Krok 9

+

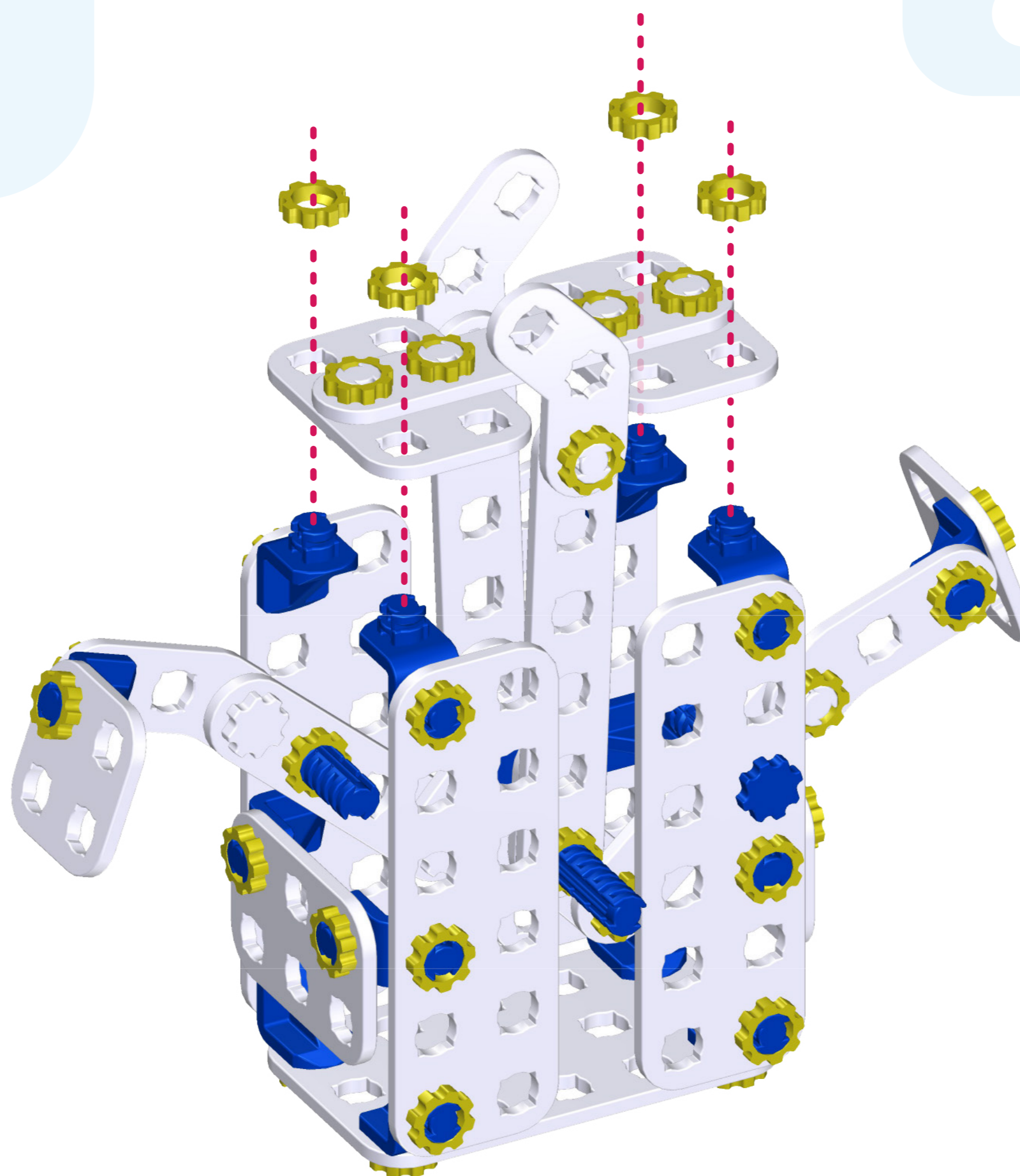


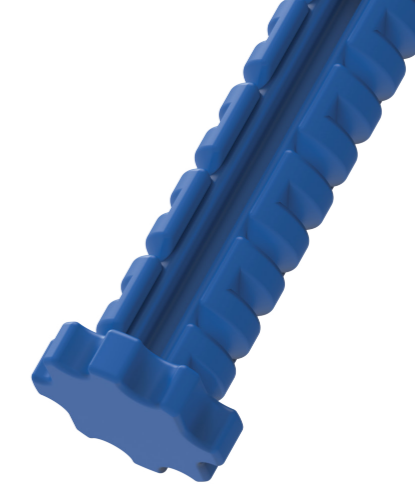
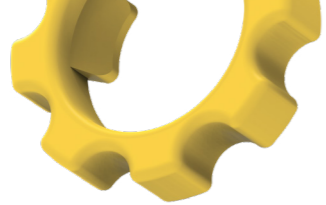
Krok 6

+



4x





SKRIWARE

