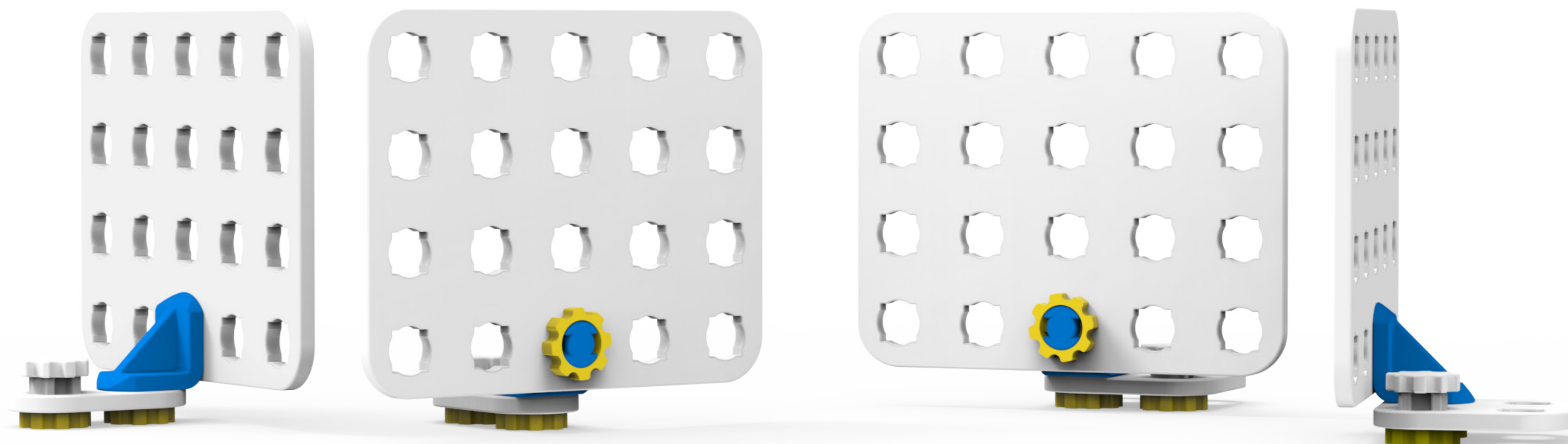
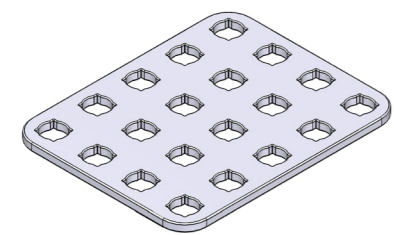


INSTRUKCJA SKŁADANIA

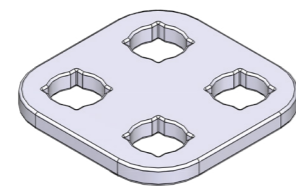
Stacja: Zapora duża



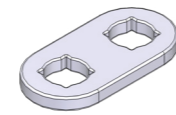
Lista elementów



4x Płytką 4x5



2x Płytką 2x2



2x Płytką 1x2



4x Śrubka sztywna



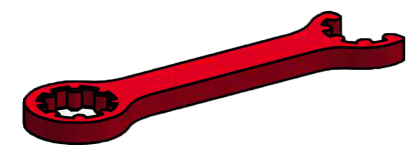
4x Kątownik



12x Nakrętka



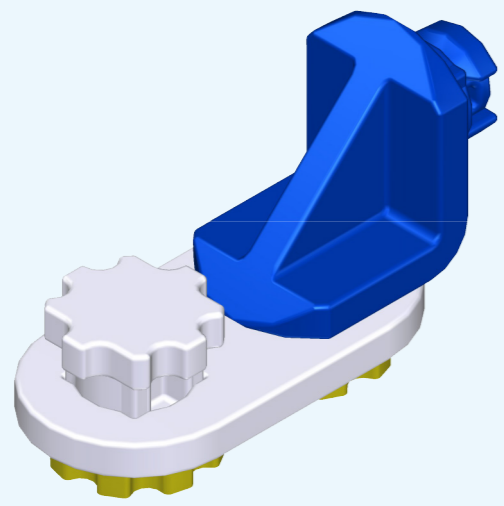
12x Rzep



1x Klucz zwykły



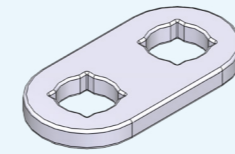
1x Klucz nasadowy



Krok 1

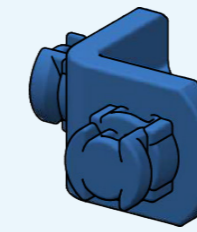
x2

2x



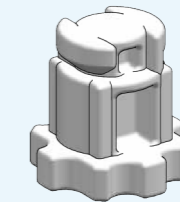
1x

+



1x

+

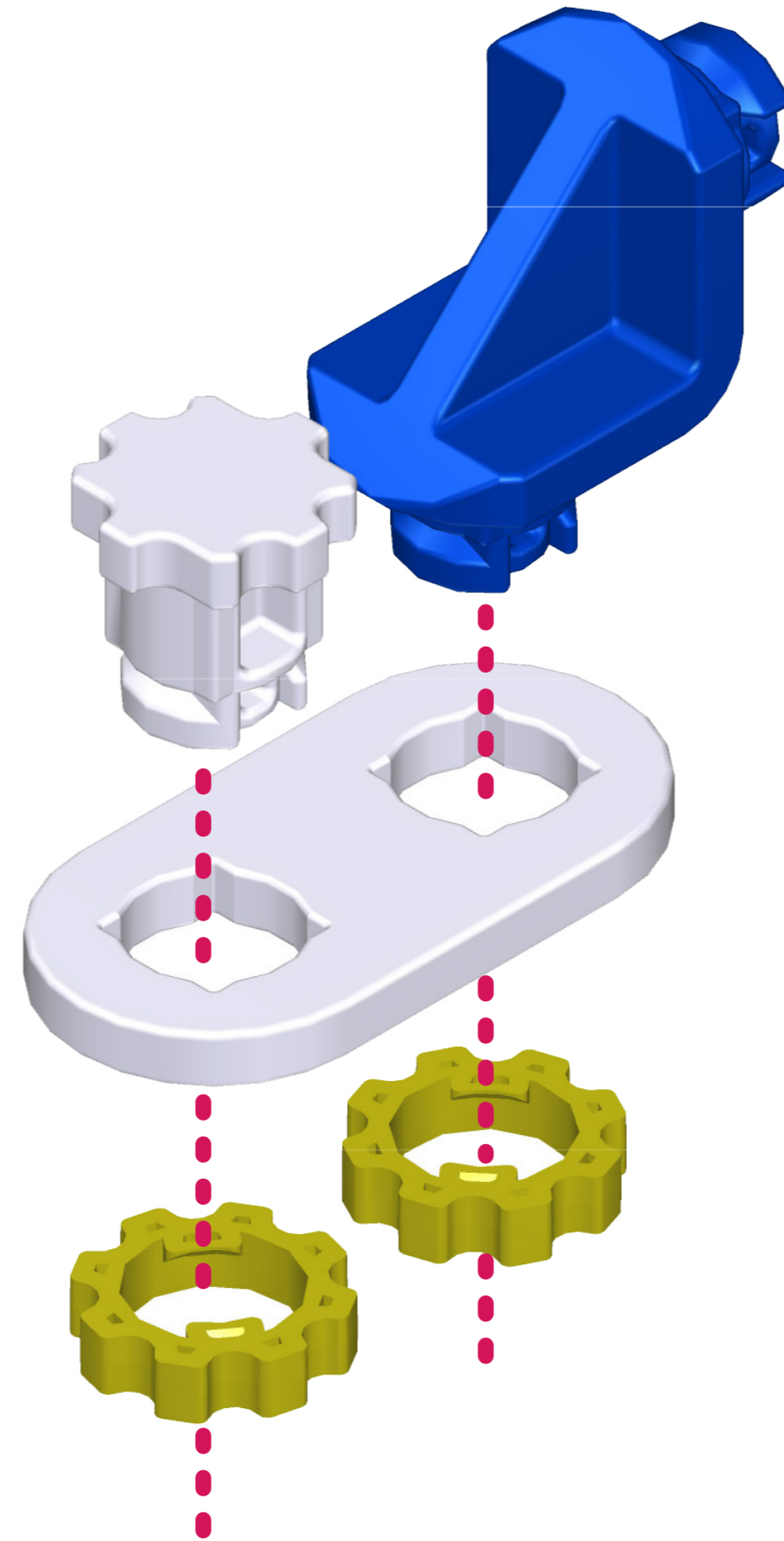


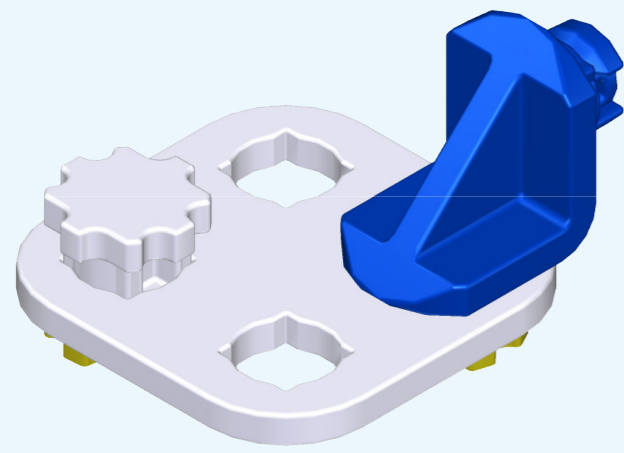
1x

+



2x

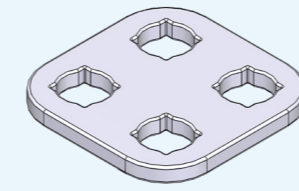




Krok 2

x2

2x



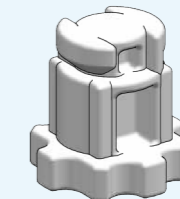
1x

+



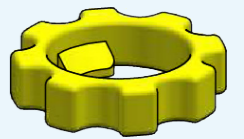
1x

+

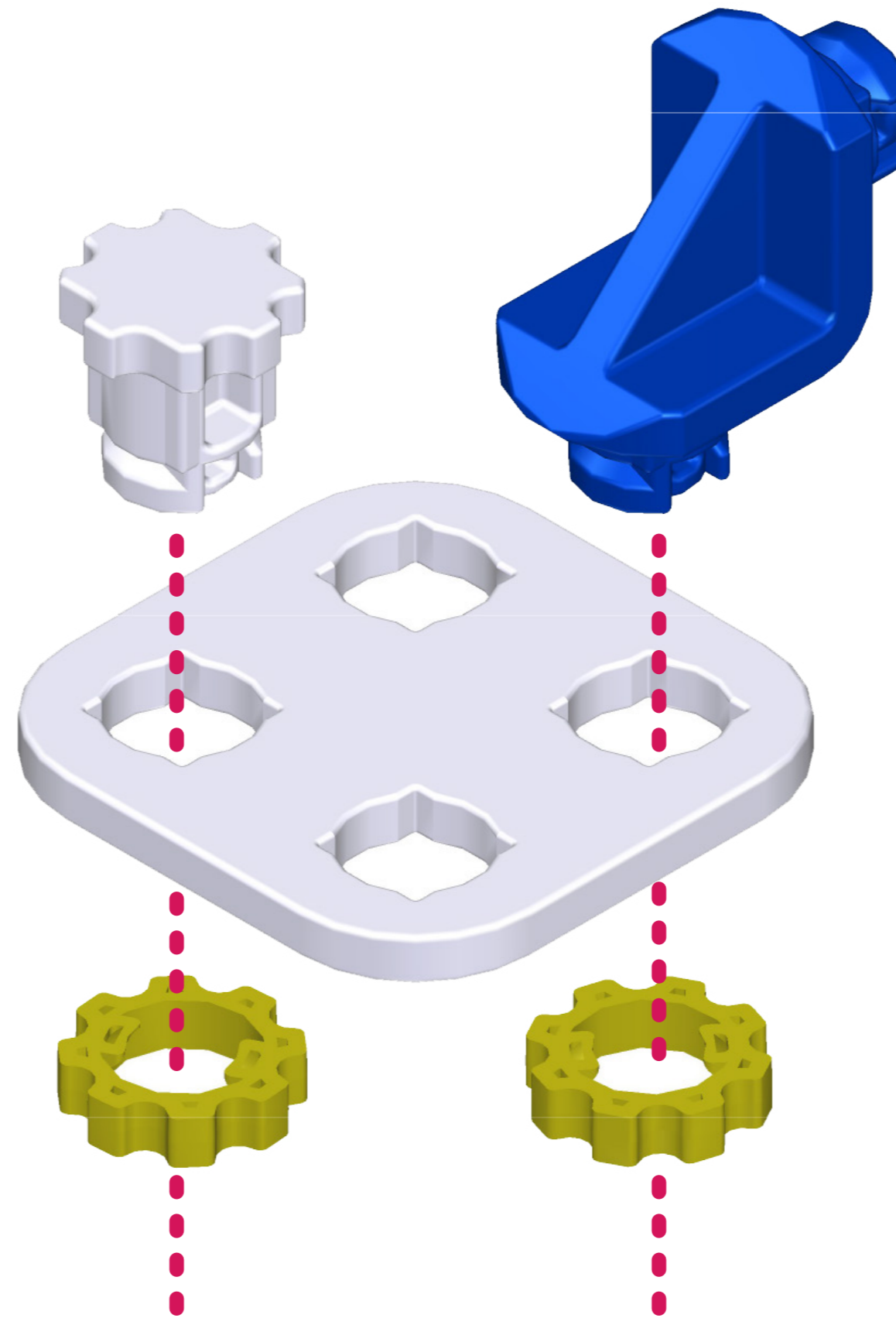


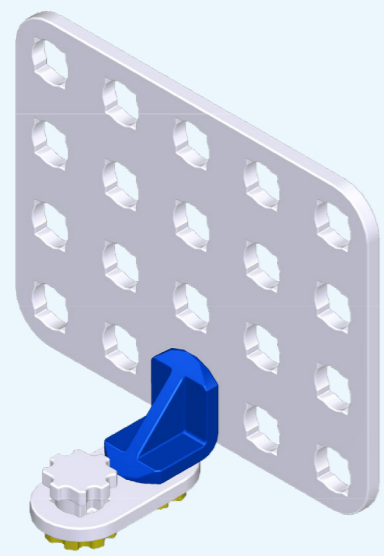
1x

+



2x

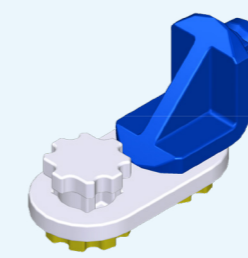




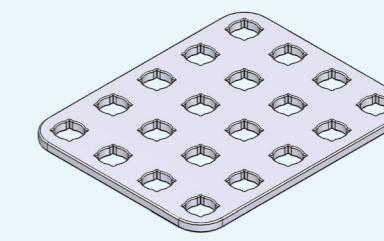
Krok 3

x2

2x



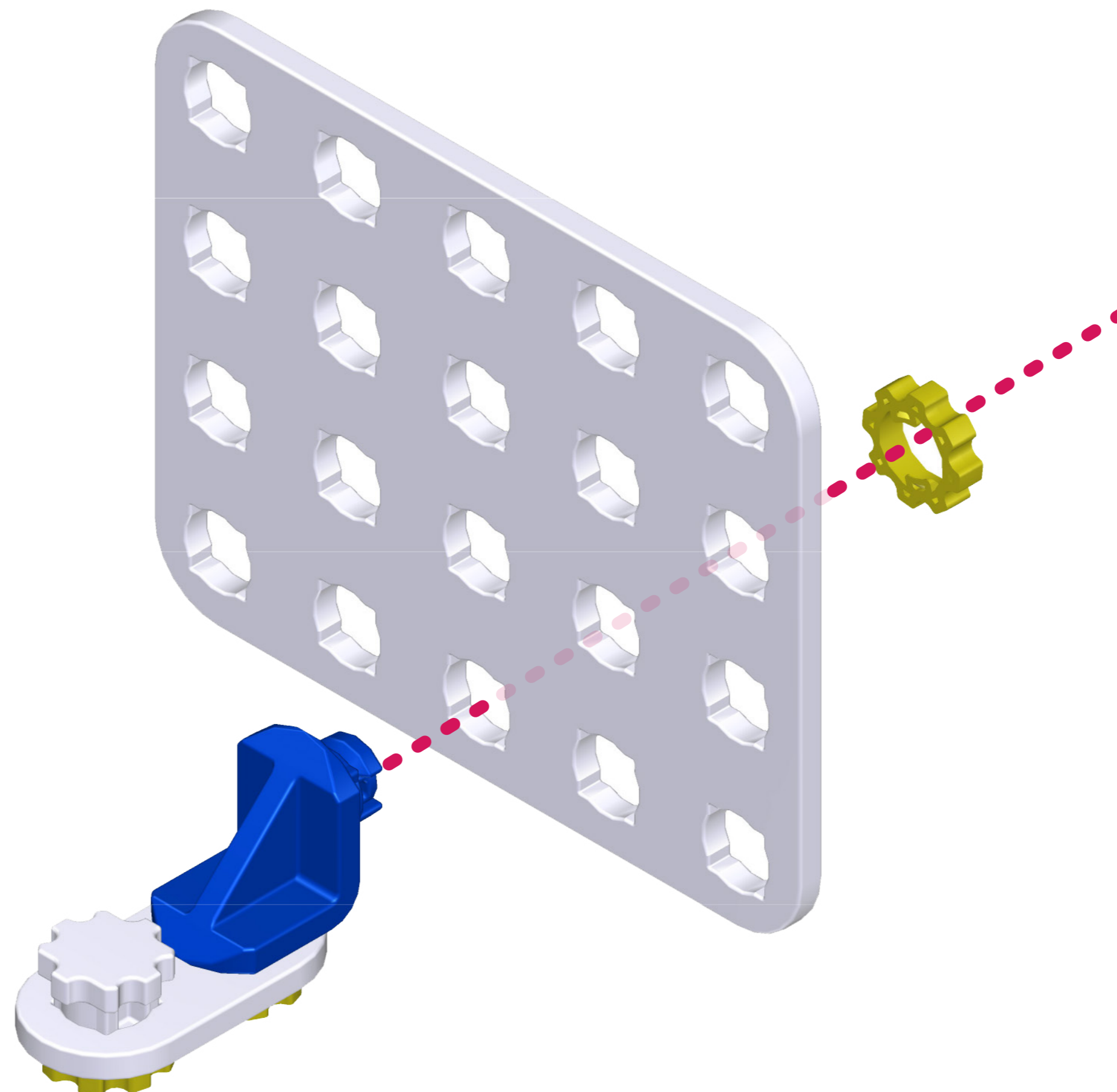
Krok 1

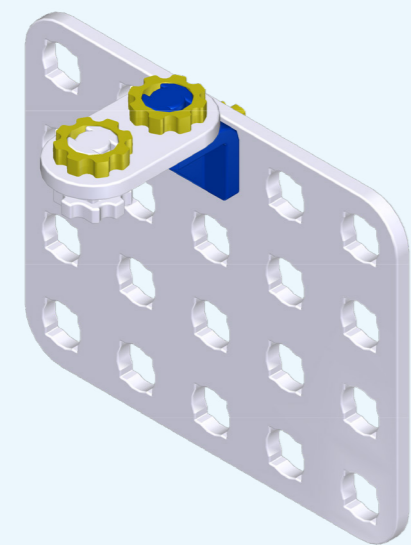


1x



1x

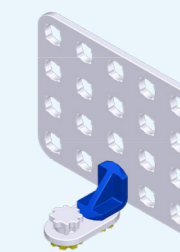




Krok 4

x2

2x



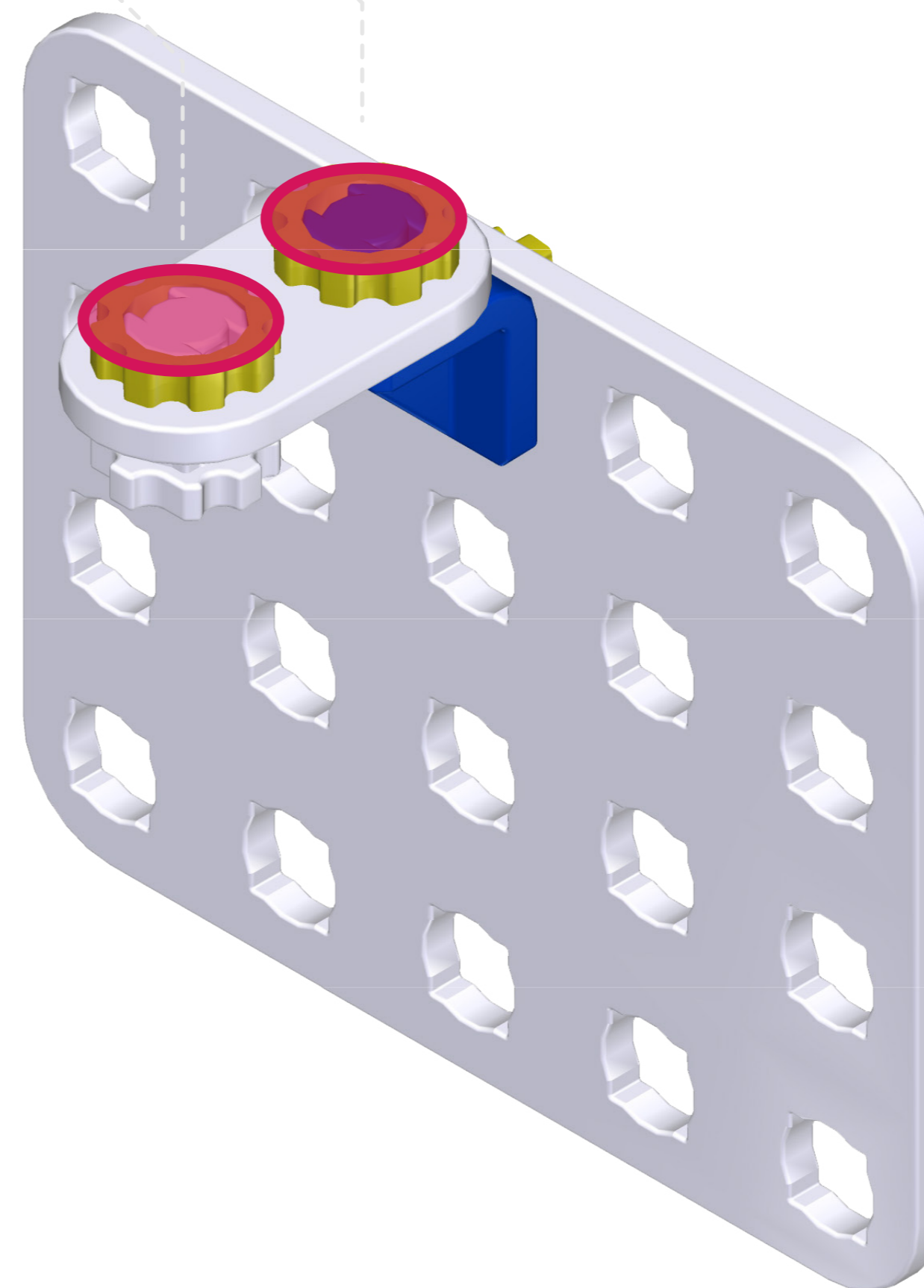
Krok 3

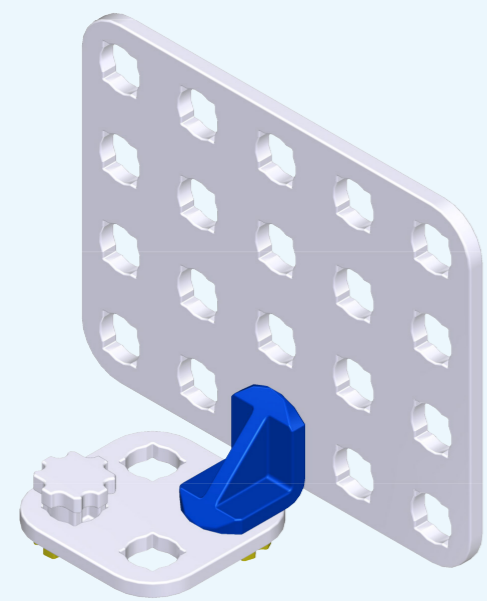
+



x2

W miejscach **podświetlonych** przyklej rzepy.

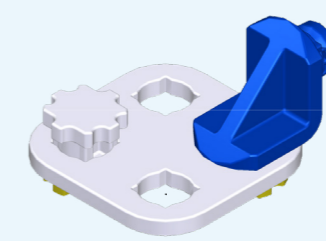




Krok 5

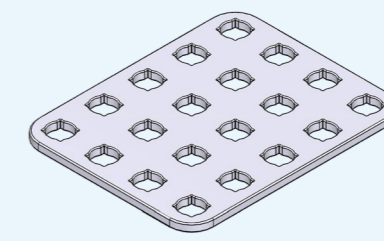
x2

2x



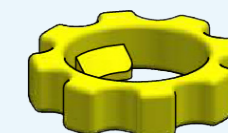
Krok 2

+

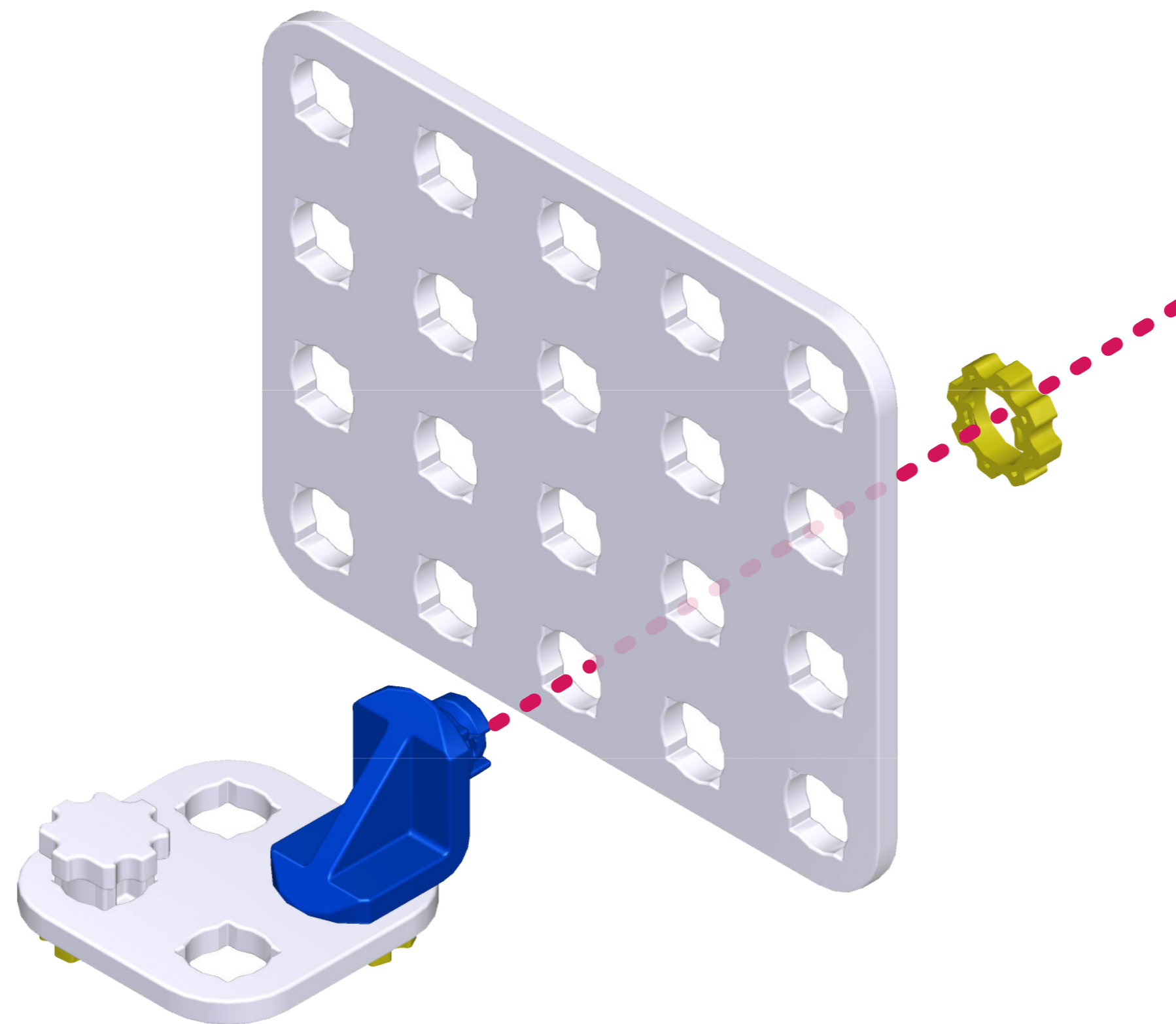


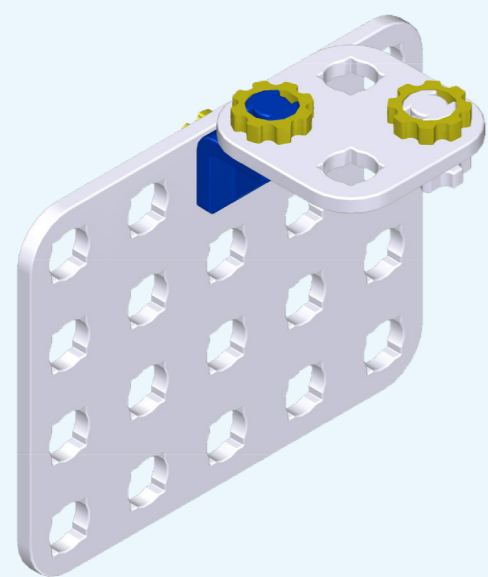
1x

+



1x

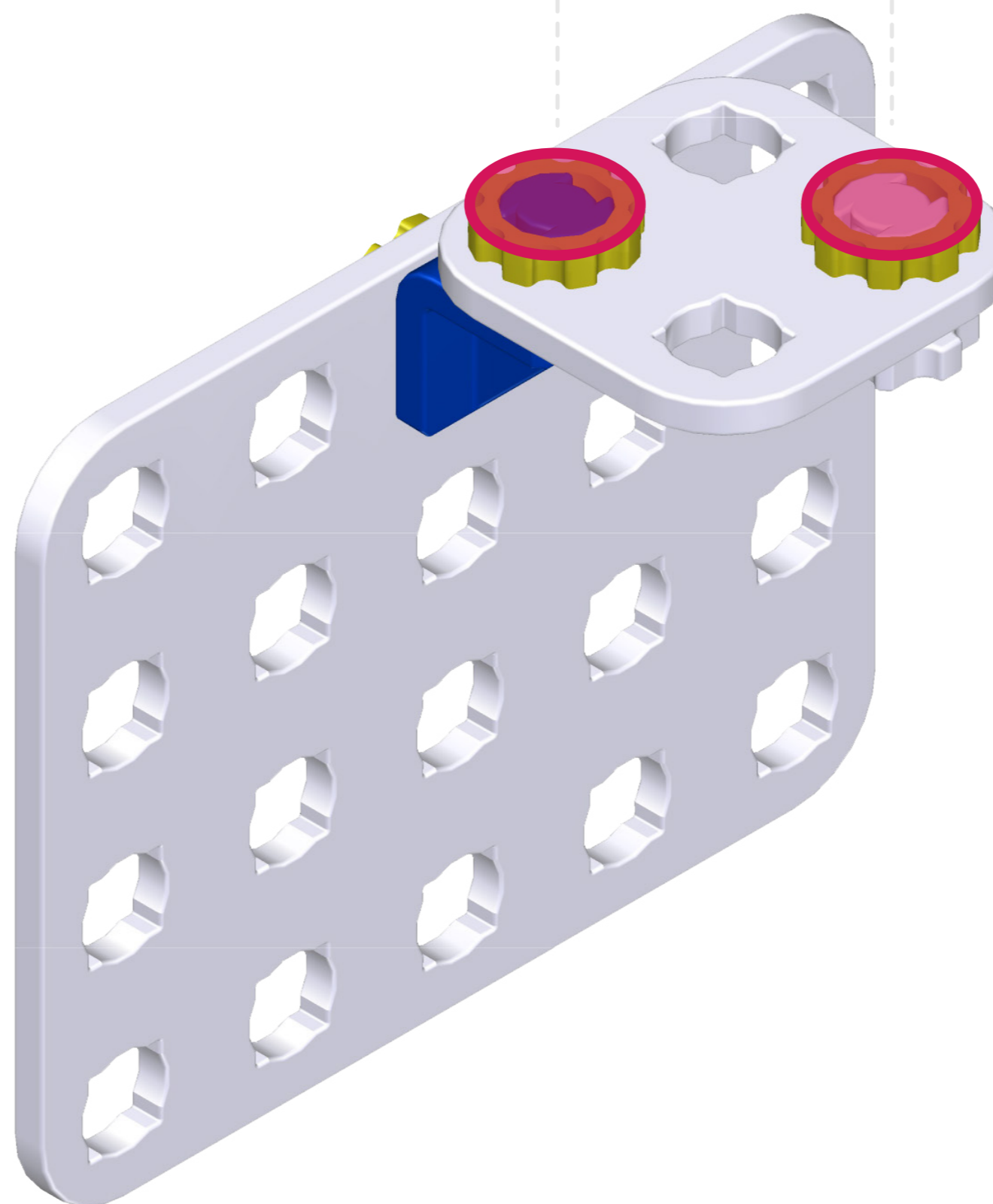




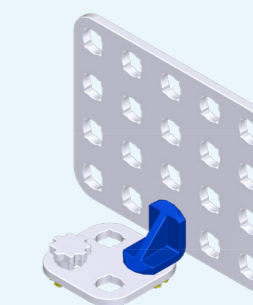
Krok 6

x2

W miejscach **podświetlonych** przyklej rzepy.



2x



Krok 5

+



x2



SKRIWARE

