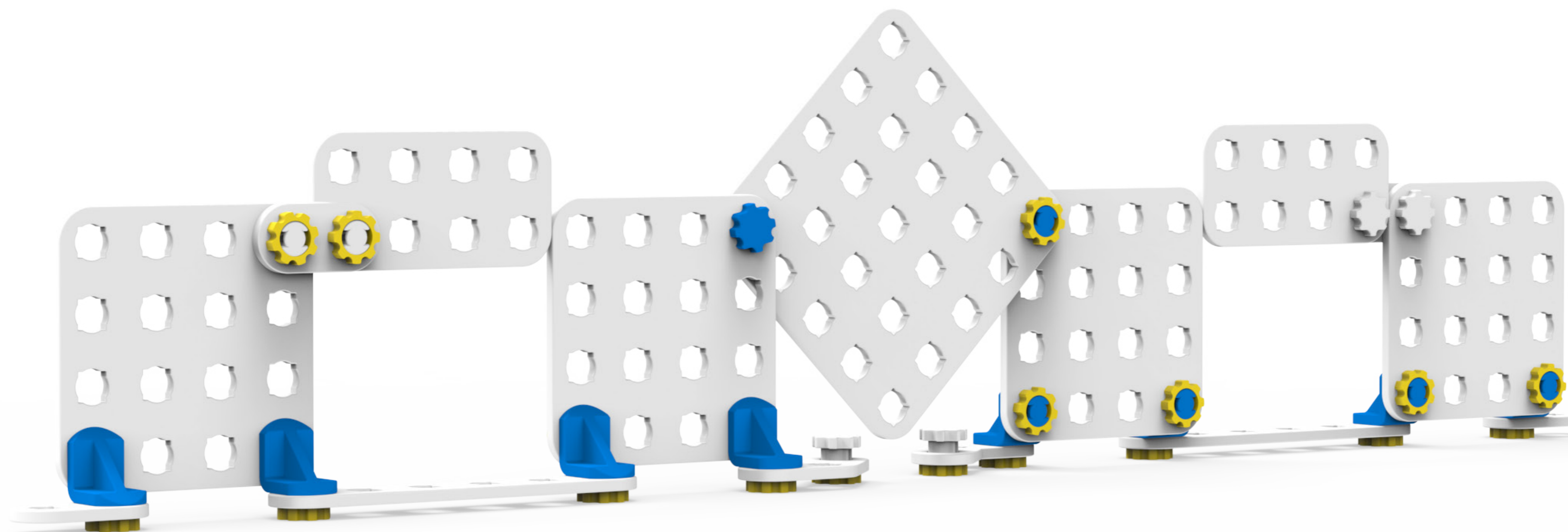
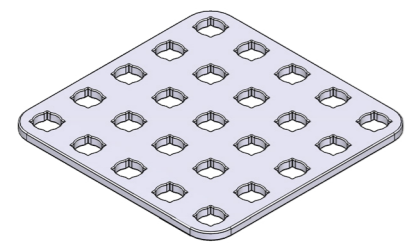


INSTRUKCJA SKŁADANIA

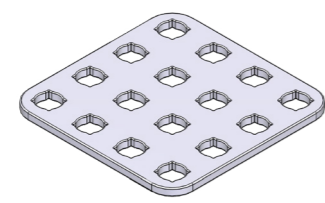
Stacja: Zapora główna



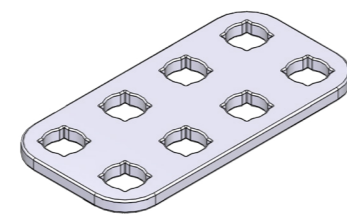
Lista elementów



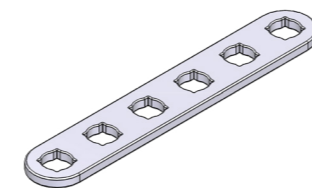
1x Płytki 5x5



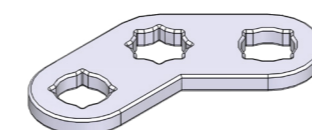
4x Płytki 4x4



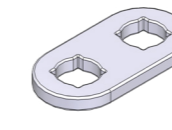
2x Płytki 2x4



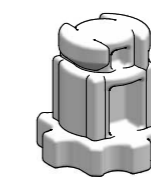
2x Płytki 1x6



2x Płytki 1x3 45°



4x Płytki 1x2



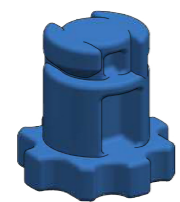
6x Śrubki sztywne



8x Kątownik



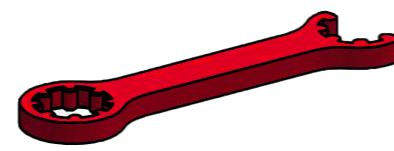
24x Nakrętka



2x Śrubki obrotowe



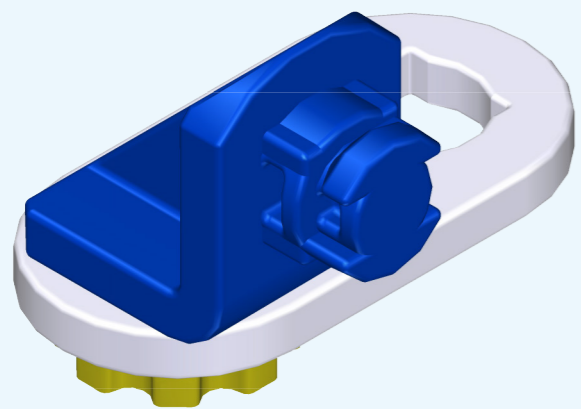
10x Rzep



1x Klucz zwykły



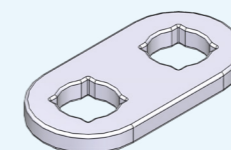
1x Klucz nasadowy



Krok 1

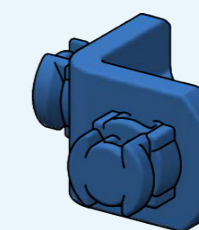
x2

2x



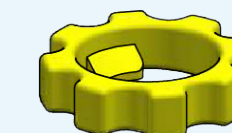
1x

+

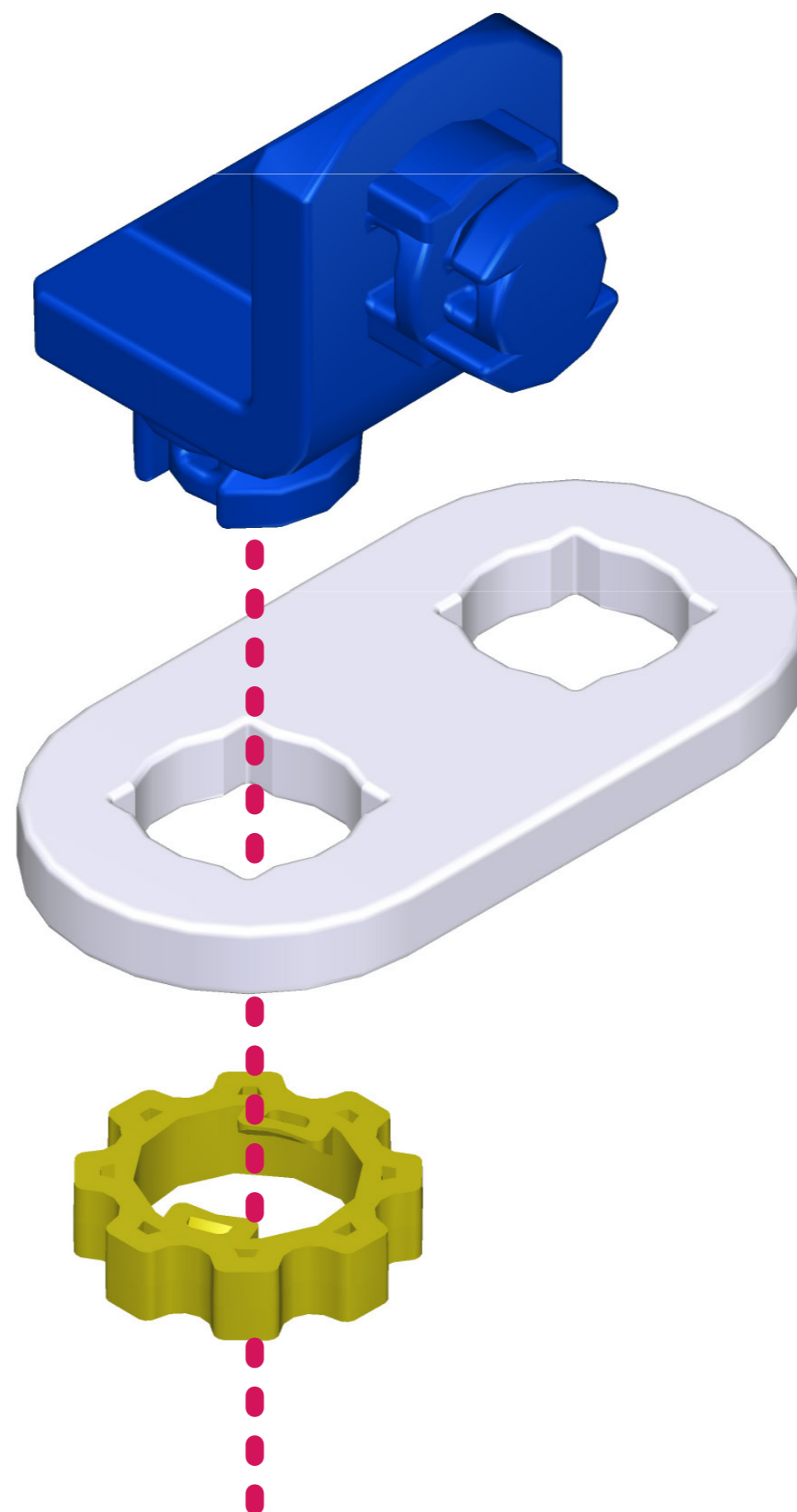


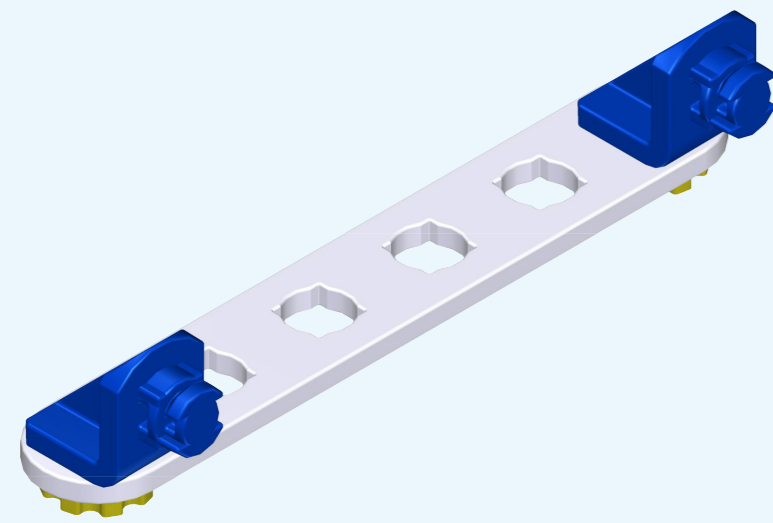
1x

+



1x

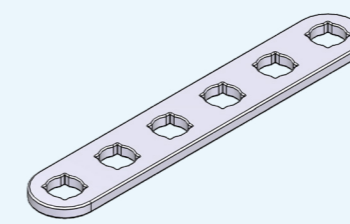




Krok 2

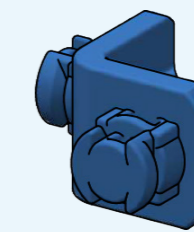
x2

2x



1x

+

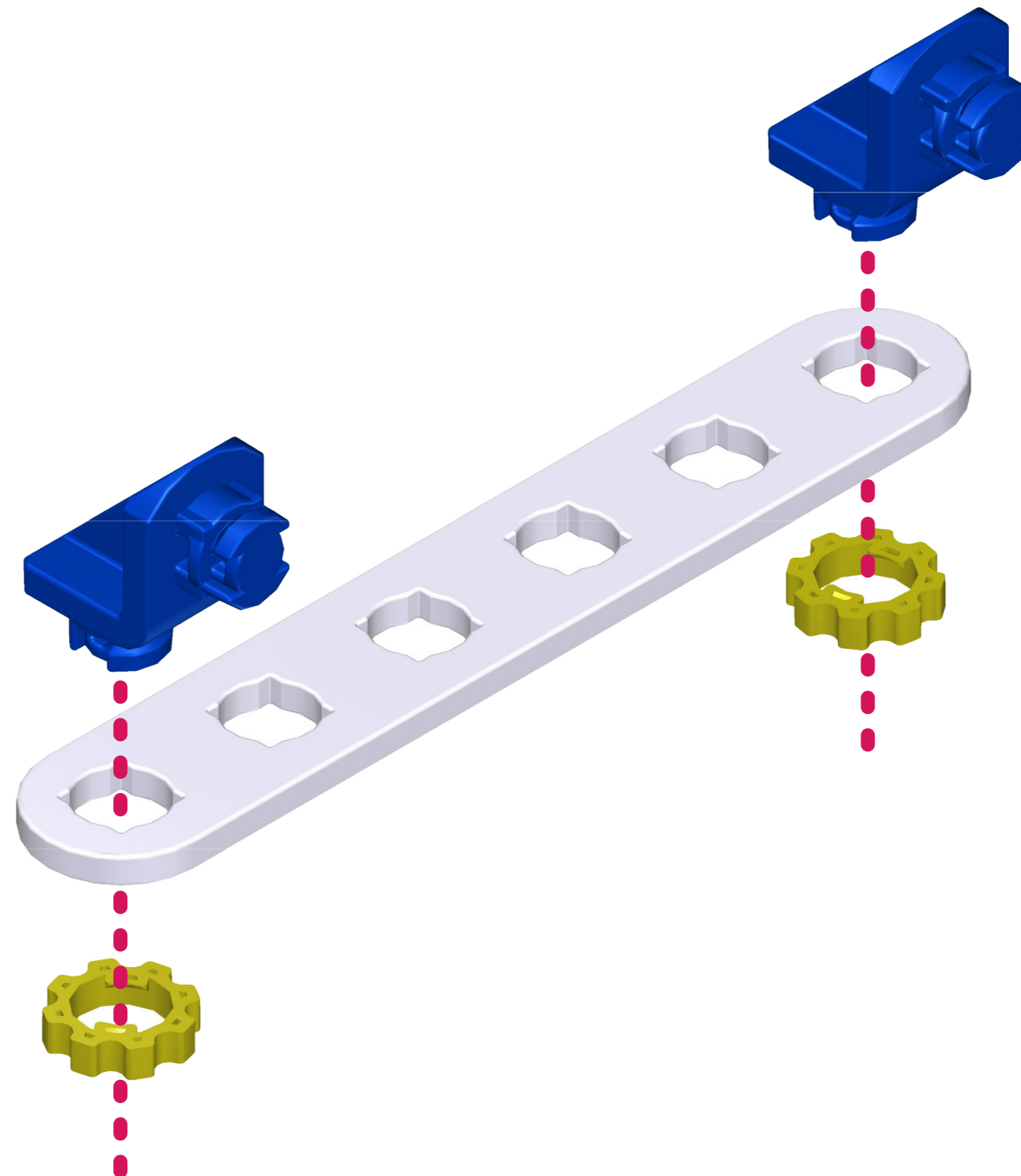


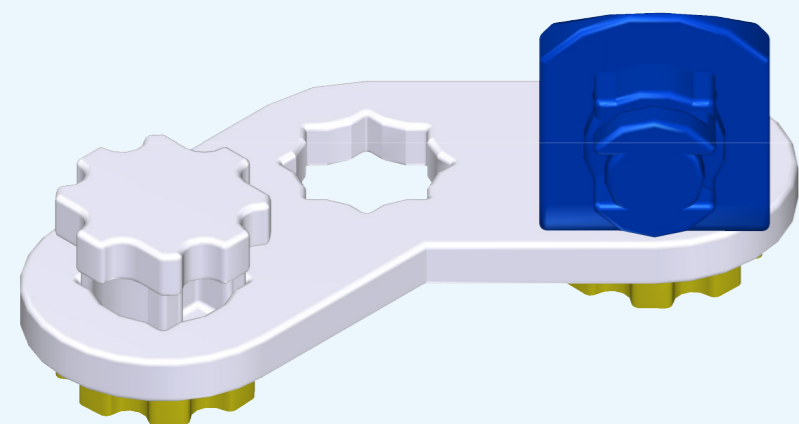
2x

+



2x

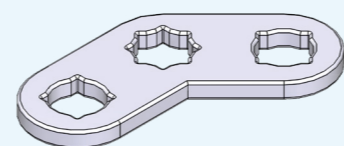




Krok 3

x2

2x



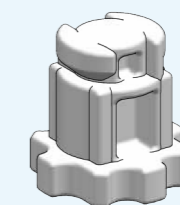
1x

+



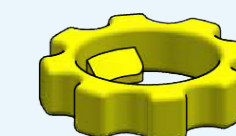
1x

+

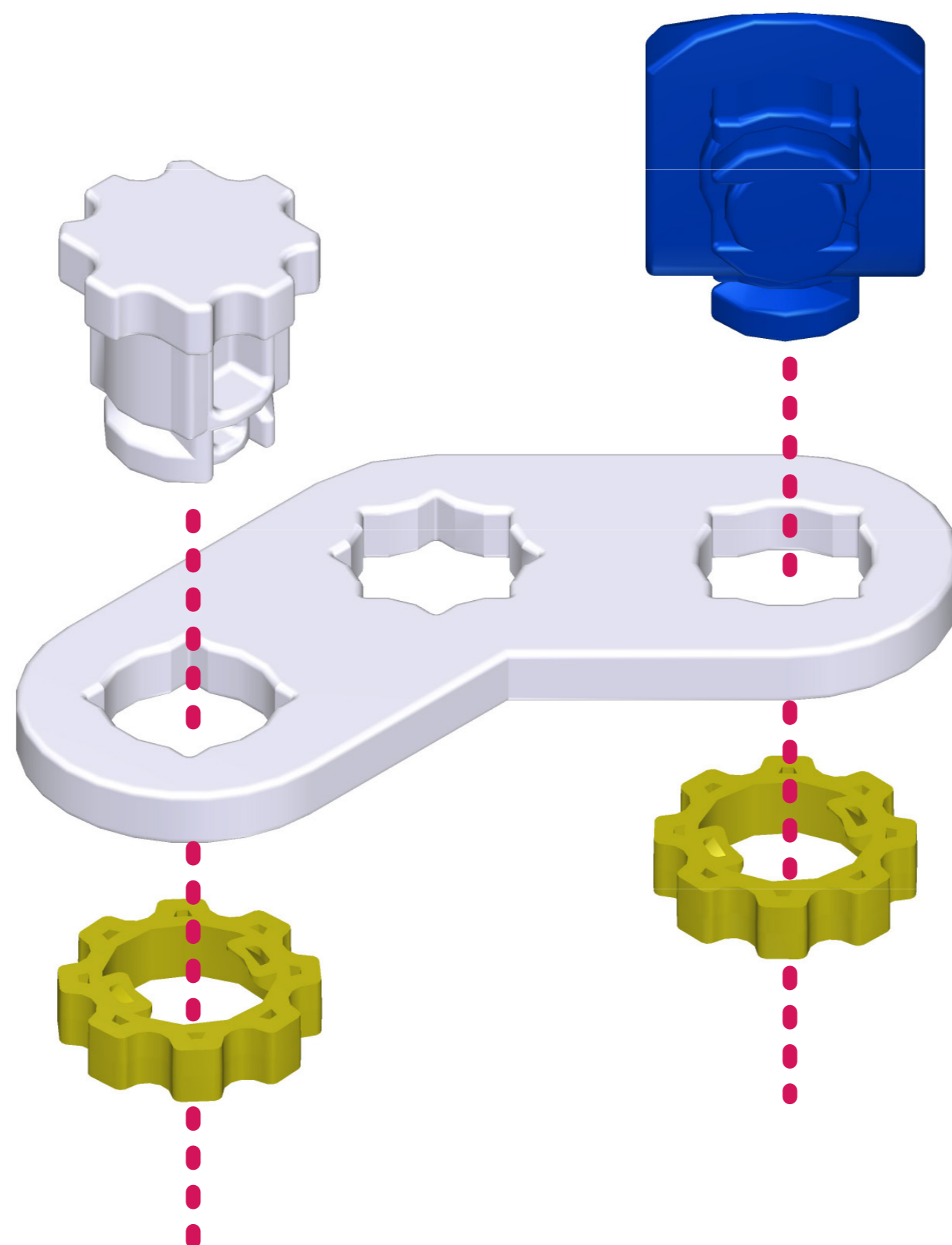


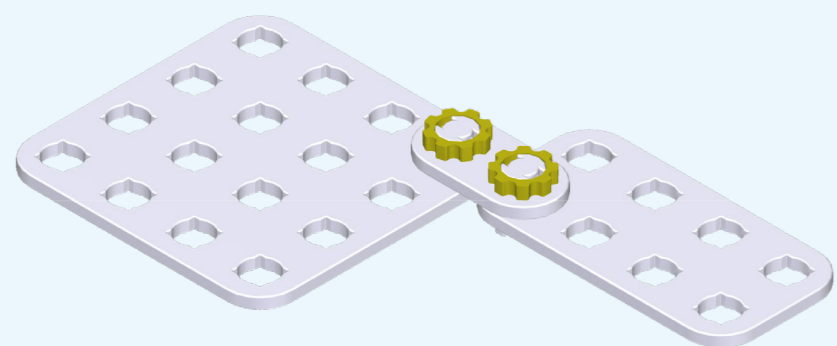
1x

+



2x

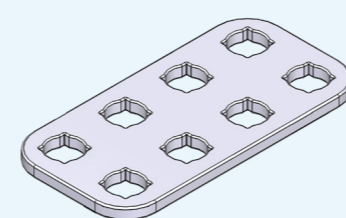




Krok 4

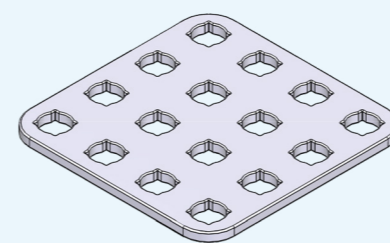
x2

2x



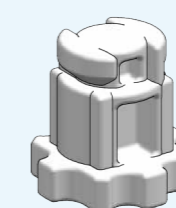
1x

+



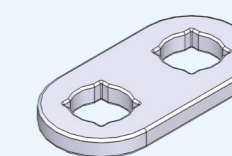
1x

+



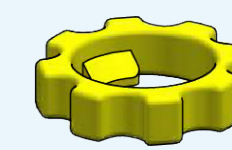
2x

+

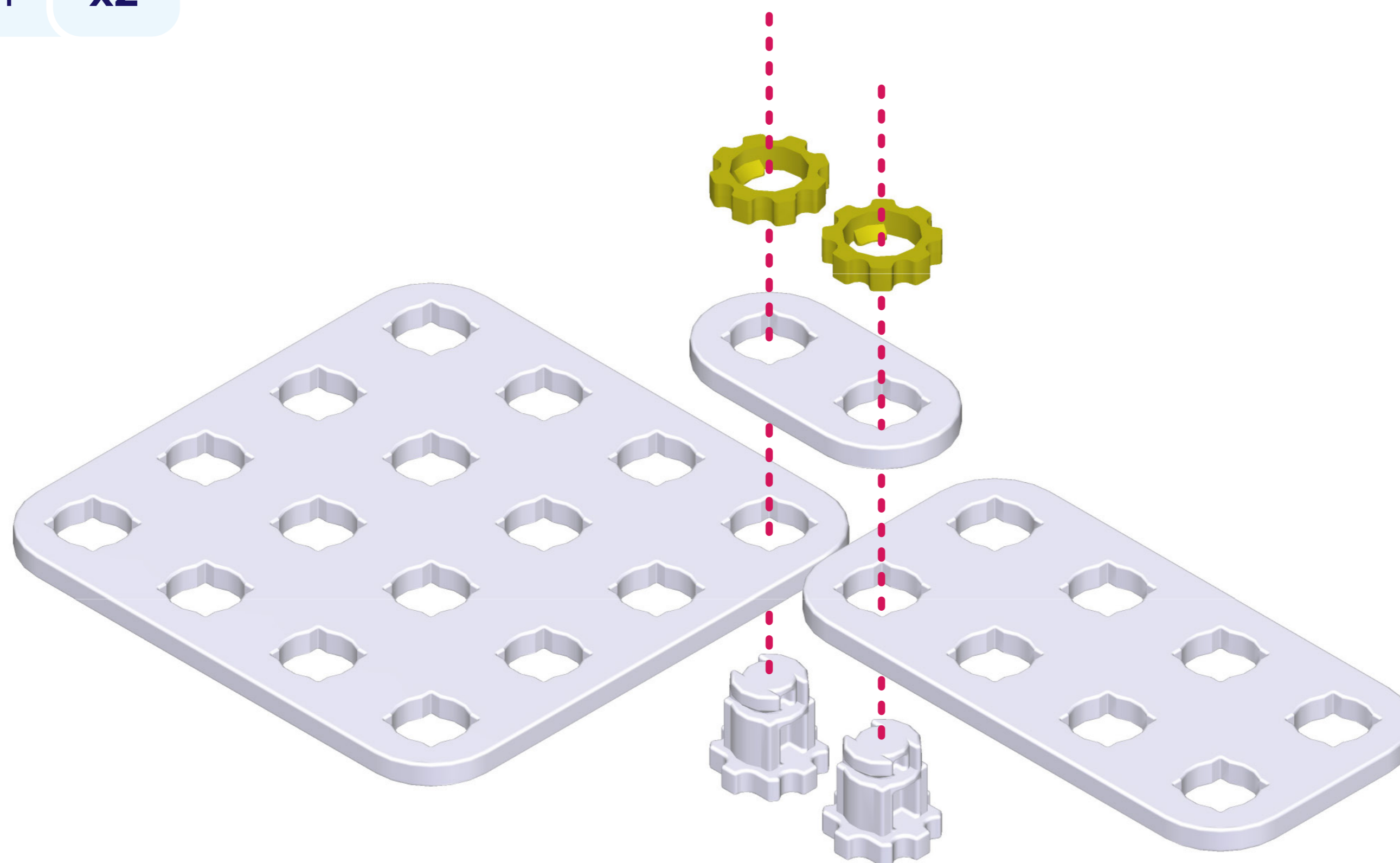


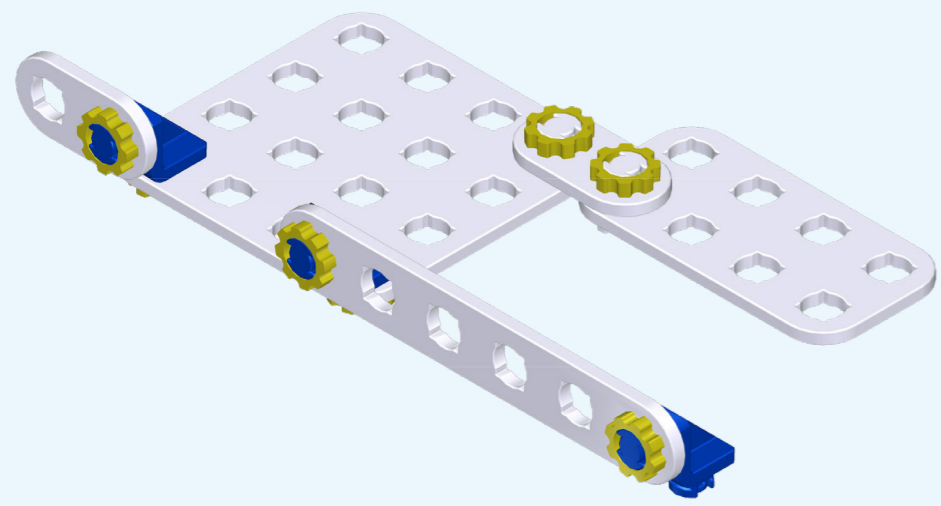
1x

+



2x

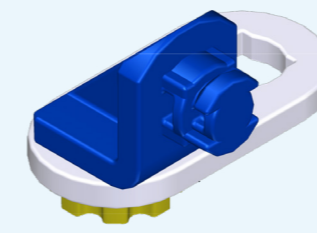




Krok 5

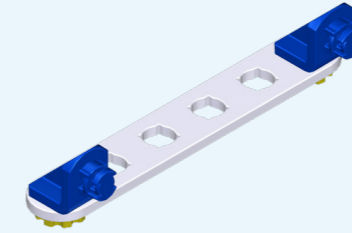
x2

2x



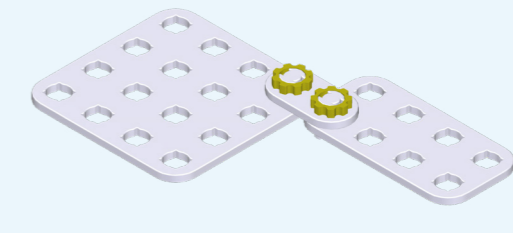
Krok 1

+



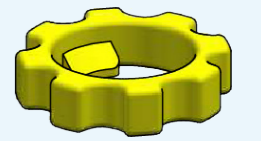
Krok 2

+

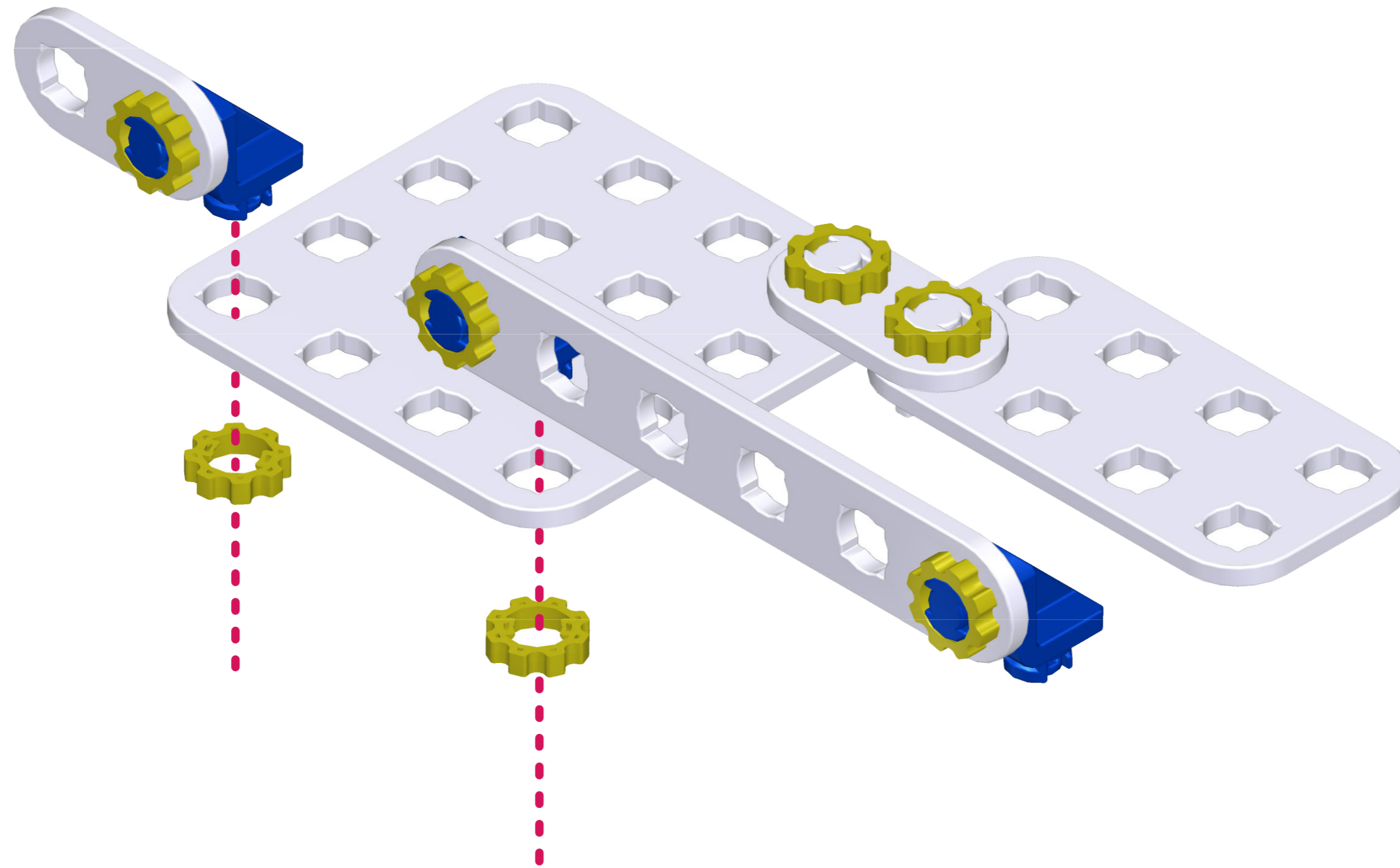


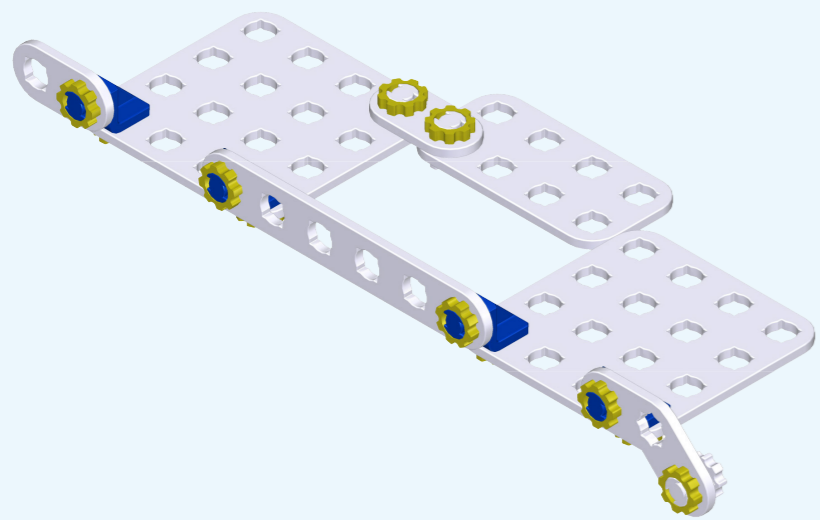
Krok 4

+



2x

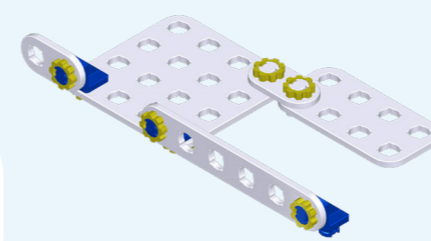




Krok 6

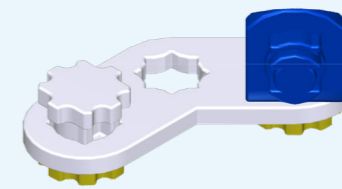
x2

2x



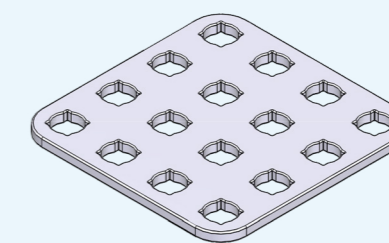
Krok 5

+



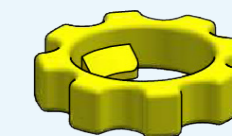
Krok 3

+

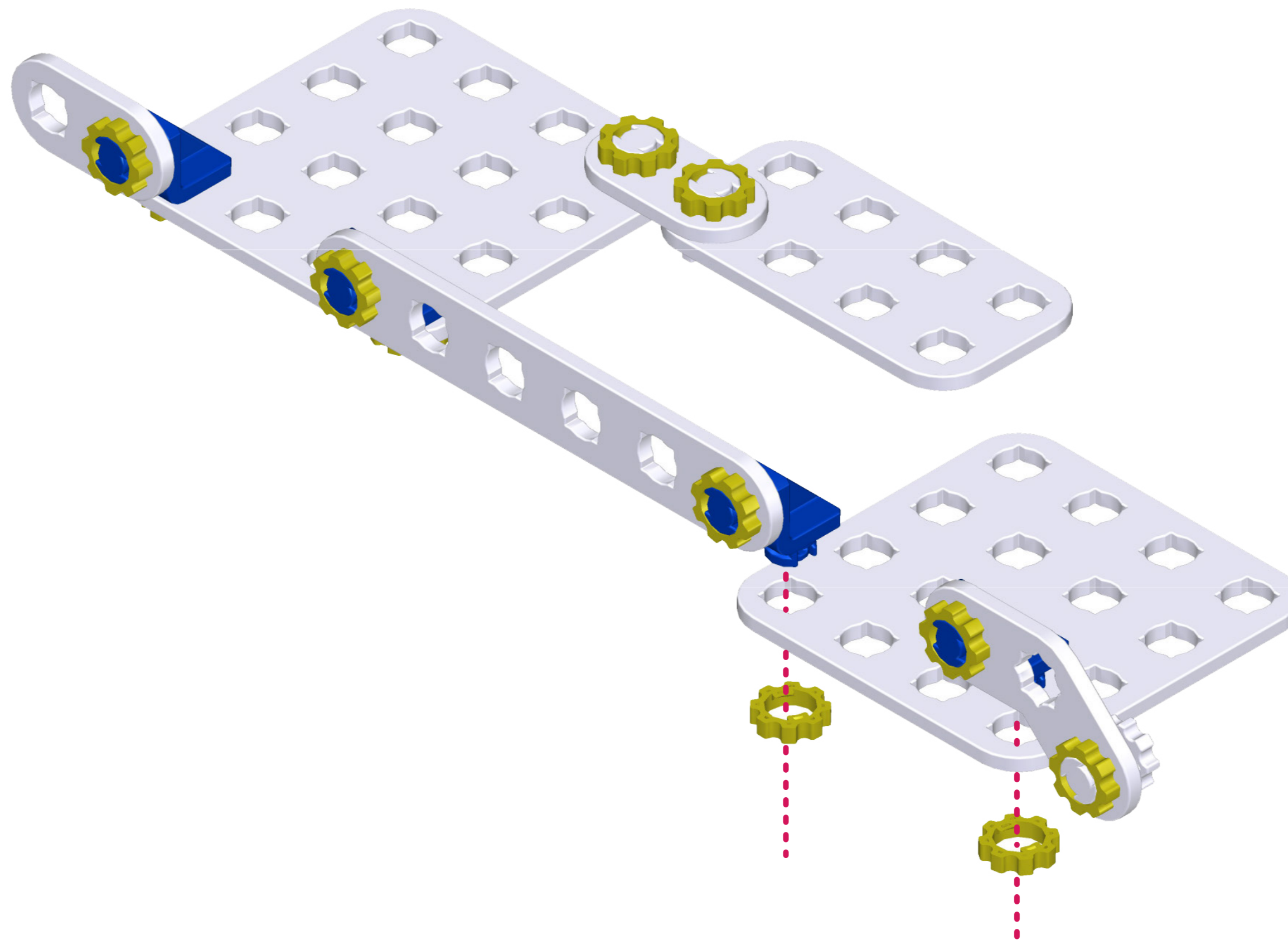


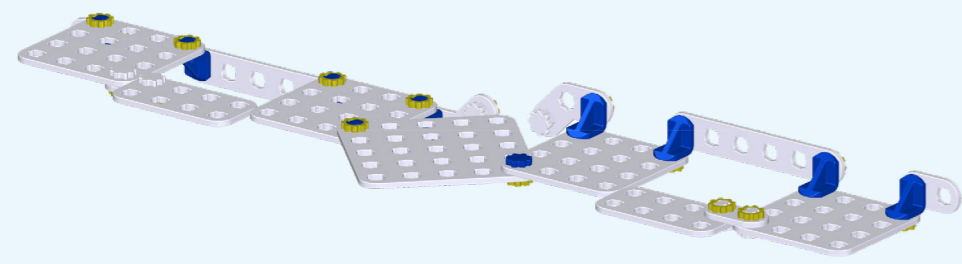
1x

+

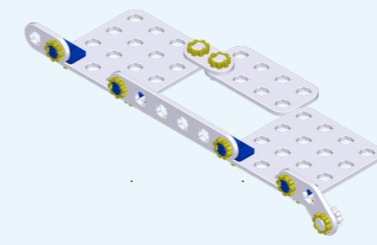


2x



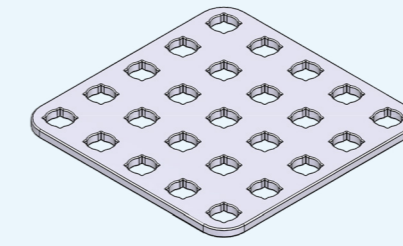


Krok 7



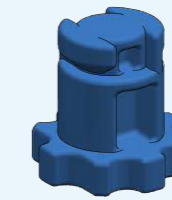
2x Krok 6

+



1x

+

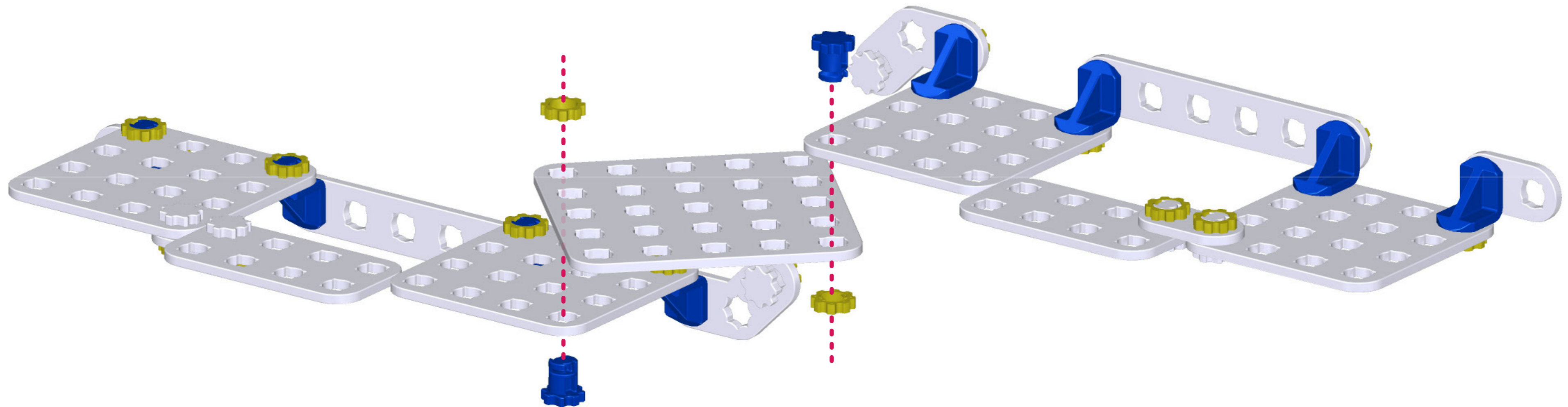


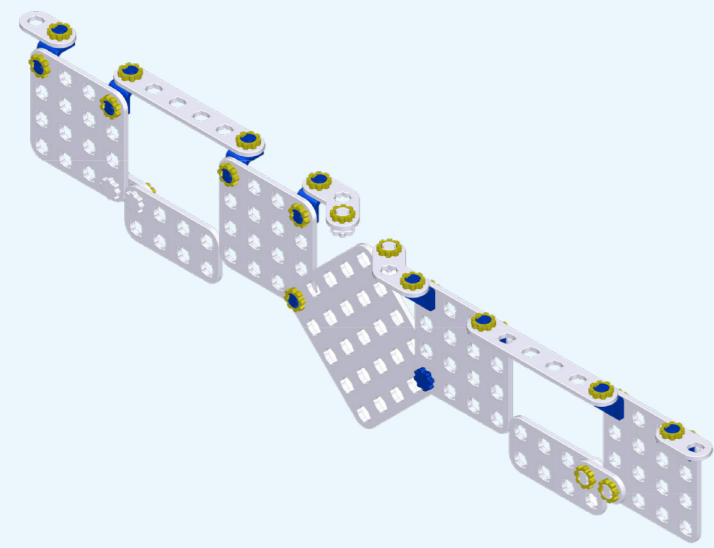
2x

+



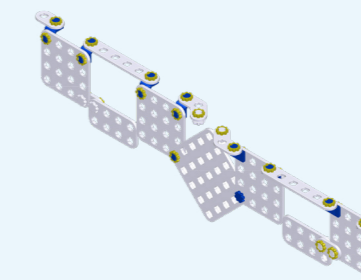
2x





Krok 8

2x

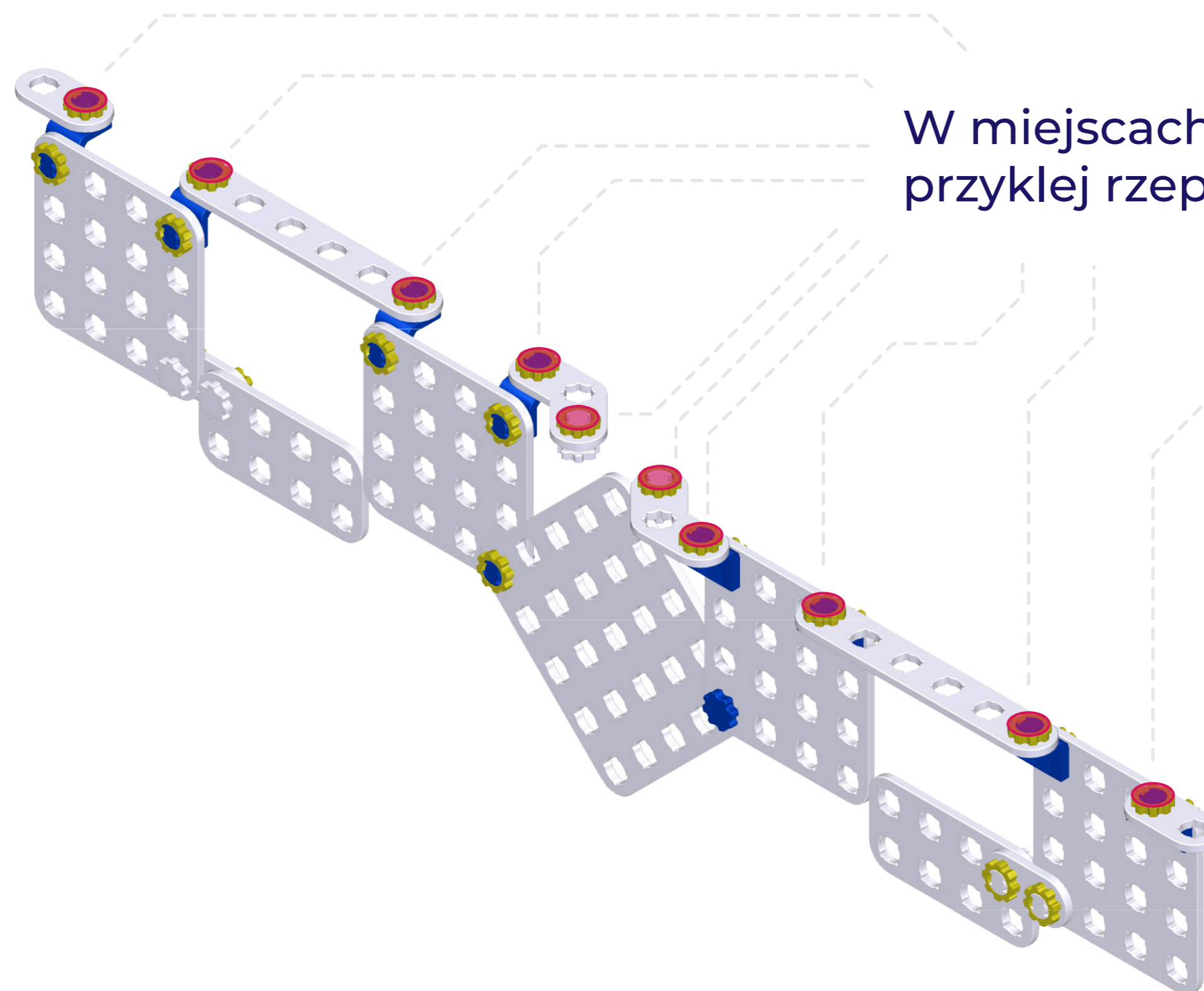


Krok 7

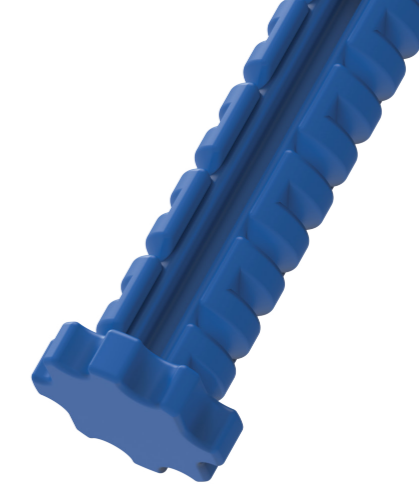
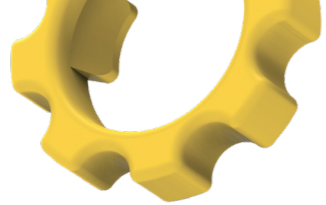
+



10x



W miejscach **podświetlonych** przyklej rzepy.



SKRIWARE

